

Chemical Information:

Name: 4,4'-Diphenylmethane diisocyanate
CAS No.: 101-68-8
Tox21_ID No.: Tox21_200268
NTP_CID No.: 350

Date of Analysis: 13 November 2009

Supplier: Sigma-Aldrich
Lot No.: 12117KD
MW: 250.25 g/mol

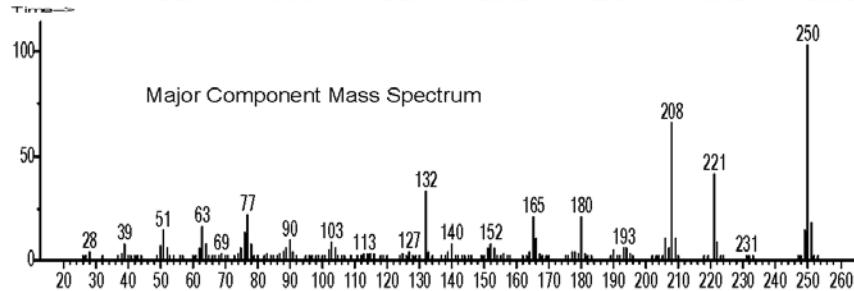
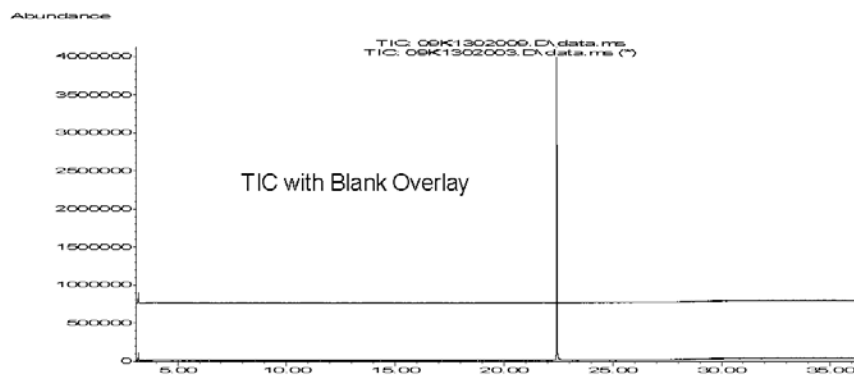
Purity and Identity Results:

| Peak Identity | Retention Time (min) | Purity (% Total Area) ^a |
|-----------------------------------|----------------------|------------------------------------|
| 4,4'-Diphenylmethane diisocyanate | 22.43 | 100.00 |

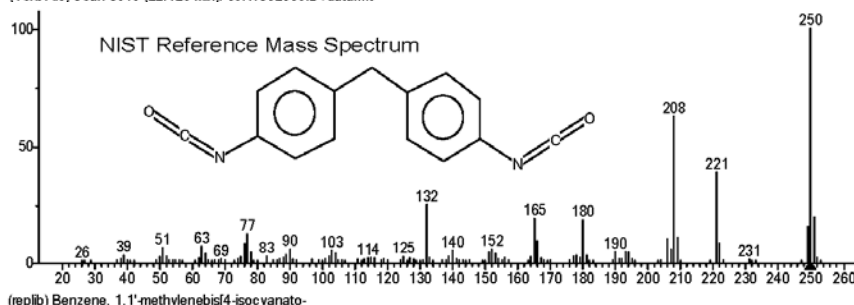
^a Peaks comprising $\geq 0.5\%$ of total area.

GC/MS Instrument Parameters:

| | |
|-------------------------|---|
| Instrument / Ionization | Gas Chromatograph with Mass Spectrometer / Electron Impact |
| Solvent | Dichloromethane (~ 1 mg/mL) |
| Column | J&W Scientific HP-5MS, 30 m x 0.25 mm ID, 0.25- μ m film thickness |
| Carrier Gas | Helium at 1.0 mL/min |
| Oven Program | 35°C, hold 2 min; ramp @ 10°C/min to 310°C, hold 7 min |
| Source Temperature | 230°C |
| Auxiliary Temperature | 250°C |
| Scan Range | 25 – 500 amu |
| Injector Temperature | 250°C |
| Injection Volume / Mode | 1 μ L / Split (100:1) |
| Data Analysis Software | MSD ChemStation, ver D.03.00.SP1; NIST Library ver 2.0f, build 10/08/2008 |



(Text File) Scan 3545 (22.426 min): 09K1302009.D\data.ms



(replib) Benzene, 1,1'-methylenebis[4-isocyanato-