

Chemical Information:

Name: 4-Chlorobenzaldehyde
CAS No.: 104-88-1 Supplier: Sigma-Aldrich
Tox21_ID No.: Tox21_200136 Lot No.: 13926MC
NTP_CID No.: 370 MW: 140.57 g/mol

Date of Analysis: 04 December 2007

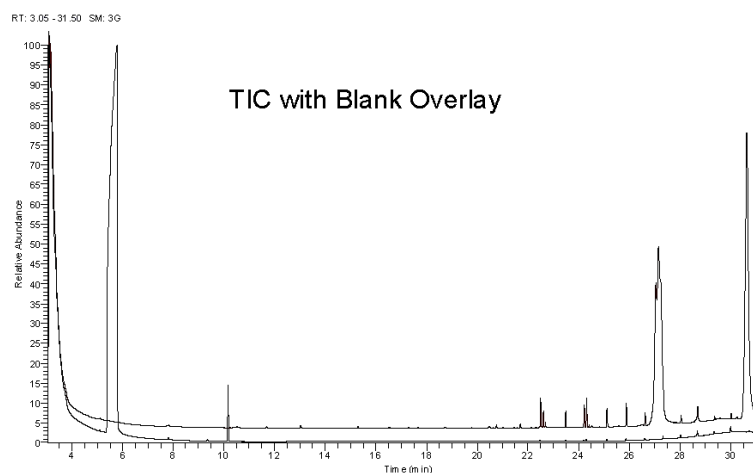
Purity and Identity Results:

Peak Identity	Retention Time (min)	Purity (% Total Area) ^a
DMSO	5.78	Not applicable
4-Chlorobenzaldehyde	10.18	99.34
unknown	22.90	0.66

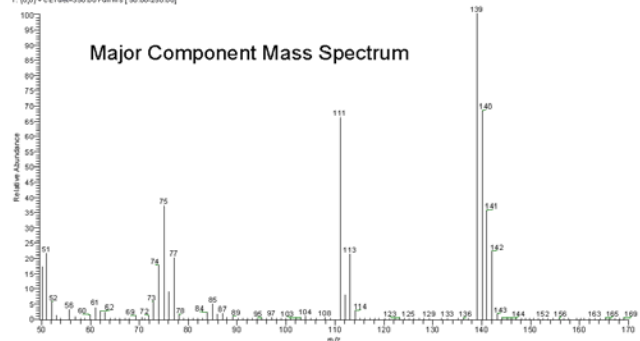
^a Peaks comprising $\geq 0.5\%$ of total area.

GC/MS Instrument Parameters:

Instrument / Ionization	Gas Chromatograph with Mass Spectrometer / Electron Impact
Solvent	Dichloromethane (100 mM in DMSO, diluted 1/1000 with dichloromethane)
Column	J&W Scientific HP-5MS, 30 m x 0.25 mm ID, 0.25- μ m film thickness
Carrier Gas	Helium at 1.0 mL/min
Oven Program	35°C, hold 2 min; ramp @ 10°C/min to 310°C, hold 2 min
Source Temperature	250°C
Auxiliary Temperature	250°C
Scan Range	50 – 250 amu
Injector Temperature	250°C
Injection Volume / Mode	2 μ L / Splitless
Run Time	31.5 minutes
Data Analysis Software	Xcalibur, v 1.2 and NIST Library v 1.7, build 11/5/1999



070401#001 RT: 10.18 AU: 1 SM: 2 10.08, 10.28 NL: 1.0266
T: (U2) = C8H5ClO (MW: 140.57) Full MS (1.00-250.00)



NIST Reference Mass Spectrum

