

Chemical Information:

Name: Toluene
CAS No.: 108-88-3
Tox21_ID No.: Tox21_201224
NTP_CID No.: 1353

Supplier: Sigma-Aldrich
Lot No.: 69996EJ
MW: 92.14 g/mol

Date of Analysis: 22 February 2010

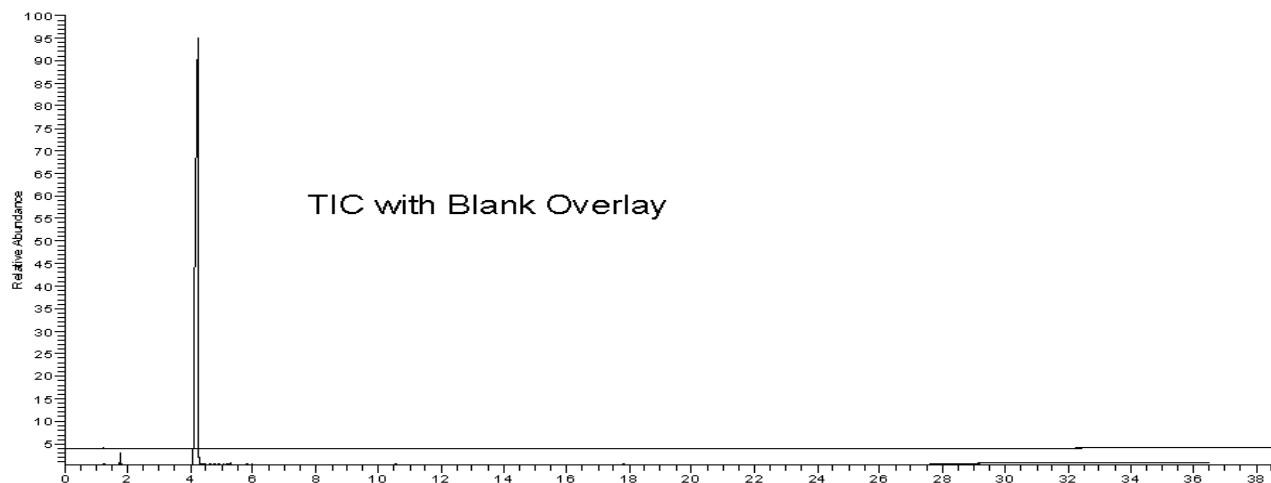
Purity and Identity Results:

Peak Identity	Retention Time (min)	Purity (% Total Area) ^a
Toluene	4.26	99.25

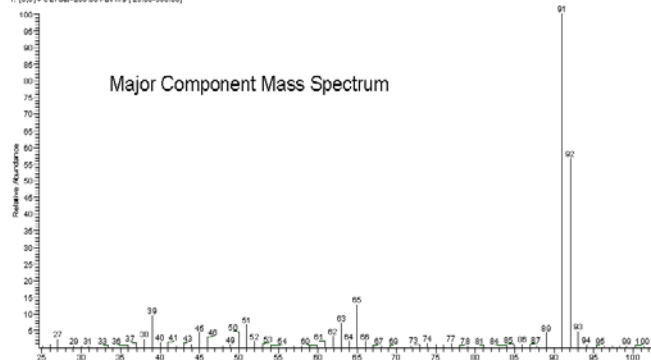
^a Peaks comprising $\geq 0.5\%$ of total area.

GC/MS Instrument Parameters:

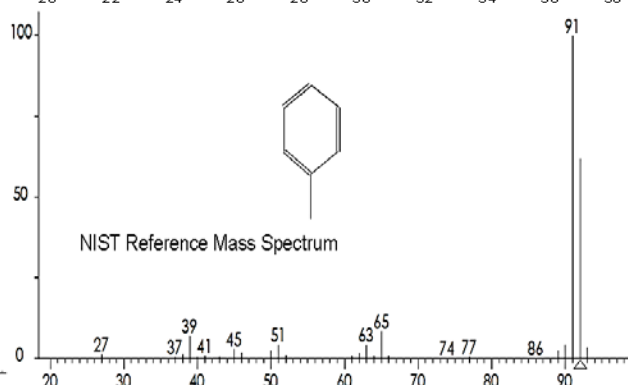
Instrument / Ionization	Gas Chromatograph with Mass Spectrometer / Electron Impact
Solvent	Not applicable
Column	J&W Scientific HP-5MS, 30 m x 0.25 mm ID, 0.25- μ m film thickness
Carrier Gas	Helium at 1.0 mL/min
Oven Program	-10°C, hold 4 min; ramp @ 10°C/min to 310°C, hold 7 min
Source Temperature	200°C
Auxiliary Temperature	200°C
Scan Range	25 – 500 amu
Injector Temperature	200°C
Injection Volume / Mode	1 μ L / Split (420:1)
Data Analysis Software	Xcalibur, v 1.2 and NIST Library v 2.0f, build 10/08/2008



10824708 #451 RT: 4.09 AU: 1 SB: 9.401-4.03, 4.48-4.51 NL: 9.0085
T: (0.0) v: 1.0 (user=200.00 Full ms) (25.00-999.00)



Major Component Mass Spectrum



NIST Reference Mass Spectrum