

Chemical Information:

Name: Ethanol, 2-(2-ethoxyethoxy)-, acetate
CAS No.: 112-15-2 Supplier: Sigma-Aldrich
Tox21_ID No.: Tox21_200843 Lot No.: 1394274
NTP_CID No.: 2679 MW: 176.21 g/mol

Date of Analysis: 24 June 2009

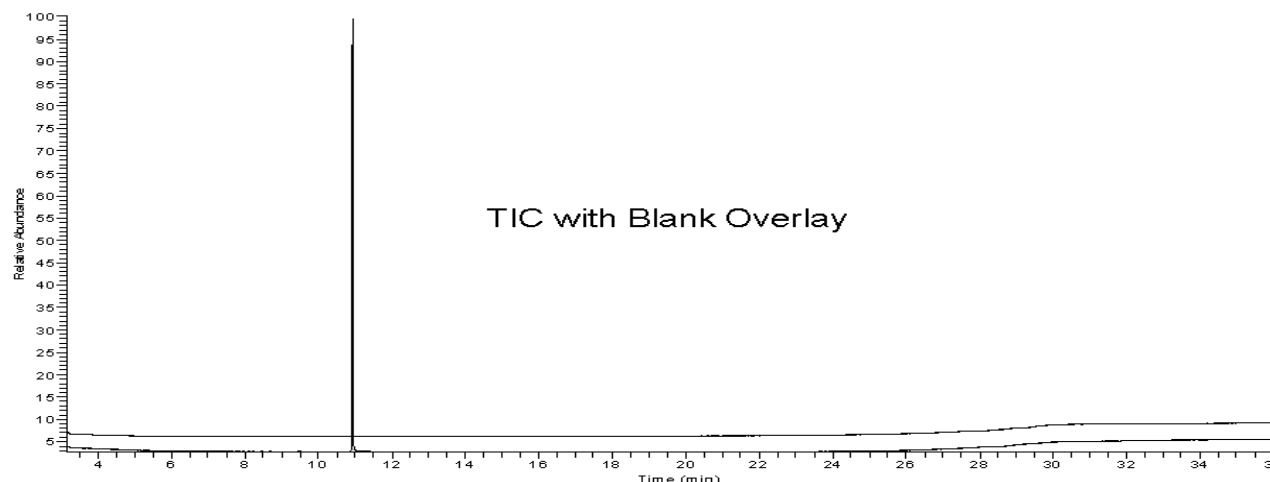
Purity and Identity Results:

Peak Identity	Retention Time (min)	Purity (% Total Area) ^a
Ethanol, 2-(2-ethoxyethoxy)-, acetate	10.94	100.00

^a Peaks comprising $\geq 0.5\%$ of total area.

GC/MS Instrument Parameters:

Instrument / Ionization	Gas Chromatograph with Mass Spectrometer / Electron Impact
Solvent	Acetone
Column	J&W Scientific HP-5MS, 30 m x 0.25 mm ID, 0.25- μ m film thickness
Carrier Gas	Helium at 1.0 mL/min
Oven Program	35°C, hold 2 min; ramp @ 10°C/min to 310°C, hold 7 min
Source Temperature	250°C
Auxiliary Temperature	250°C
Scan Range	25 – 500 amu
Injector Temperature	250°C
Injection Volume / Mode	1 μ L / Split (100:1)
Run Time	36.5 minutes
Data Analysis Software	Xcalibur, v 1.2 and NIST Library v 2.0, build 07/23/2008



09F24111 #928 RT: 10.91 AU: 1.58E+17 10.92-10.98, 11.20-11.28 NL: 2.08E5
T: (0.01) x 0.01 (user:350.00 FullScan) [25.00-500.00]

