

Chemical Information:

Name: Thiophene, tetrahydro-, 1,1-dioxide Date of Analysis: 29 July 2009
CAS No.: 126-33-0 Supplier: Sigma-Aldrich
Tox21_ID No.: Tox21_200628 Lot No.: 03222TE
NTP_CID No.: 2741 MW: 120.17 g/mol

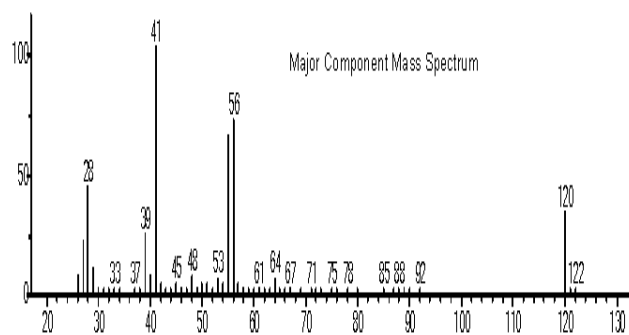
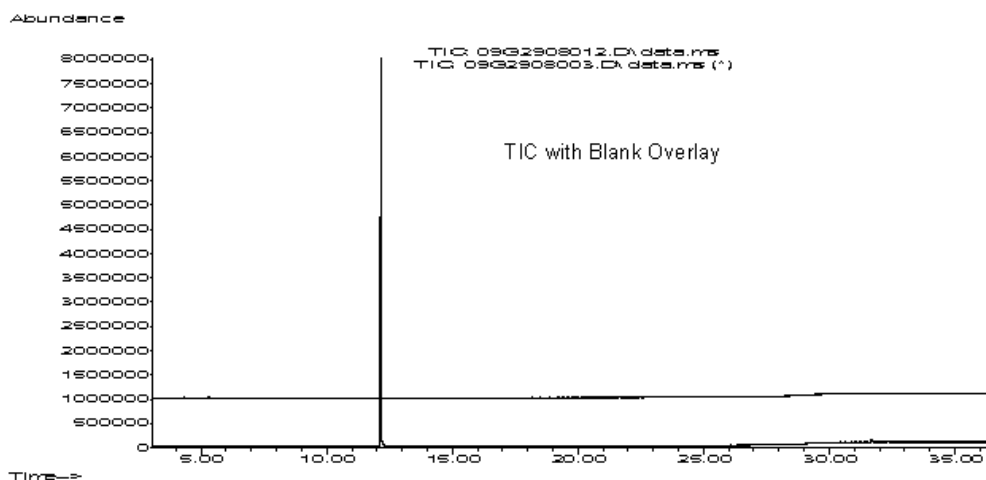
Purity and Identity Results:

Peak Identity	Retention Time (min)	Purity (% Total Area) ^a
Thiophene, tetrahydro-, 1,1-dioxide	12.15	100.00

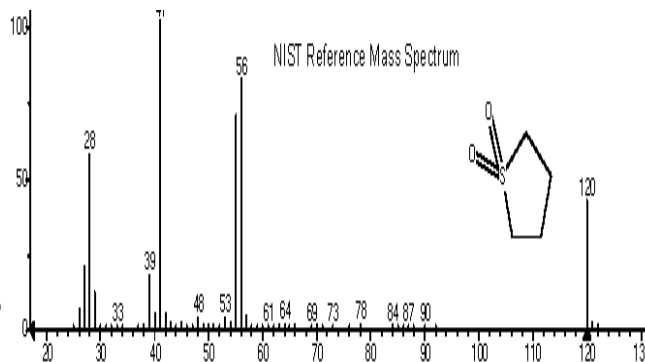
^a Peaks comprising $\geq 0.5\%$ of total area.

GC/MS Instrument Parameters:

Instrument / Ionization	Gas Chromatograph with Mass Spectrometer / Electron Impact
Solvent	Chloroform (~ 1 mg/mL)
Column	J&W Scientific HP-5MS, 30 m x 0.25 mm ID, 0.25- μ m film thickness
Carrier Gas	Helium at 1.0 mL/min
Oven Program	35°C, hold 2 min; ramp @ 10°C/min to 310°C, hold 7 min
Source Temperature	230°C
Auxiliary Temperature	250°C
Scan Range	25 – 500 amu
Injector Temperature	250°C
Injection Volume / Mode	1 μ L / Split (100:1)
Run Time	36.5 minutes
Data Analysis Software	MSD ChemStation, v D.03.00.SP1 and NIST Library v 2.0f, build 10/08/2008



(Text File) Scan 1665 (12.152 min): 09G2908012.D\data.ms



MW: 120 CAS# 126-33-0 (mainlib) Thiophene, tetrahydro-, 1,1-dioxide