

### Chemical Information:

Name: Phenol, 2,6-bis(1,1-dimethylethyl)-4-(1-methylpropyl)- Date of Analysis: 13 August 2015  
CAS No.: 17540-75-9 Supplier: Sigma-Aldrich  
Tox21\_ID No.: Tox21\_201062 Lot No.: 07706PX  
NTP\_CID No.: 3718 MW: 262.43 g/mol

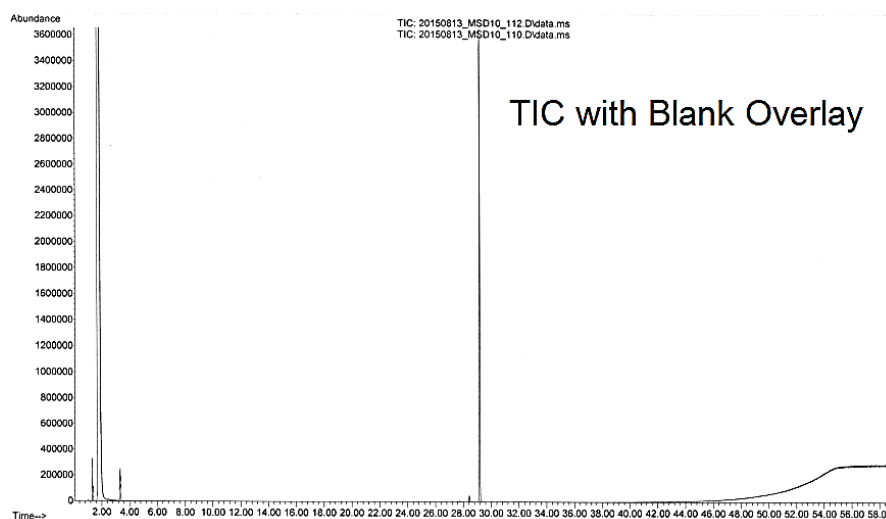
### Purity and Identity Results:

Peak Identity	Retention Time (min)	Purity (% Total Area) <sup>a</sup>
Unknown	28.43	1.17
Phenol, 2,6-bis(1,1-dimethylethyl)-4-(1-methylpropyl)-	29.17	98.41

<sup>a</sup> Peaks comprising  $\geq 0.5\%$  of total area.

### GC/MS Instrument Parameters:

Instrument / Ionization	Gas Chromatograph with Mass Spectrometer / Electron Impact
Solvent	Dichloromethane
Column	Rtx-5 MS, 30 m x 0.25 mm ID, 1- $\mu$ m film thickness
Carrier Gas	Helium at 2.0 mL/min
Oven Program	50°C, hold 0 min; ramp @ 5°C/min to 320°C, hold 5 min
Source Temperature	230°C
Auxiliary Temperature	250°C
Scan Range	40 – 550 amu
Injector Temperature	250°C
Injection Volume / Mode	1 $\mu$ L / Splitless
Data Analysis Software	MSD ChemStation, ver D.03.00.611, NIST Library ver 2.0d, build Dec 2005



Unknown: Scan 4989 (29.167 min): 20150813\_MSD10\_112.D\data.ms  
Compound in Library Factor = 367

Hit 1: Phenol, 2,6-bis(1,1-dimethylethyl)-4-(1-methylpropyl)-  
C18H30O; MF: 892; RMF: 892; Prob 76.3%; CAS: 17540-75-9; Lib: mainlib; ID: 202614.

