

Chemical Information:

Name: 2-Propanol, 1-(2-butoxy-1-methylethoxy)-
CAS No.: 29911-28-2 Supplier: Sigma-Aldrich
Tox21_ID No.: Tox21_200781 Lot No.: 09208TD
NTP_CID No.: 3332 MW: 190.28 g/mol

Date of Analysis: 13 August 2015

Purity and Identity Results:

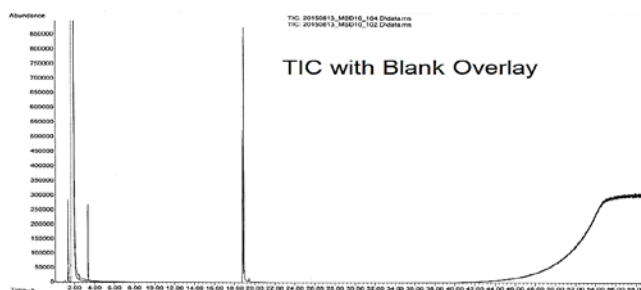
Peak Identity ^a	Retention Time (min)	Purity (% Total Area) ^b
2-Propanol, 1-(2-butoxy-1-methylethoxy)-	18.79	31.46
2-Propanol, 1-(2-butoxy-1-methylethoxy)-	18.90	63.65
2-Propanol, 1-(2-butoxy-1-methylethoxy)-	18.99	4.07
Unknown	19.43	0.82

^a Mixture of isomers, all identified as 2-propanol, 1-(2-butoxy-1-methylethoxy)-

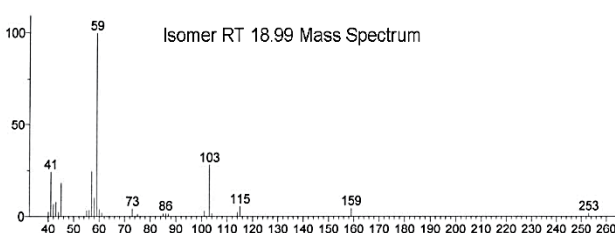
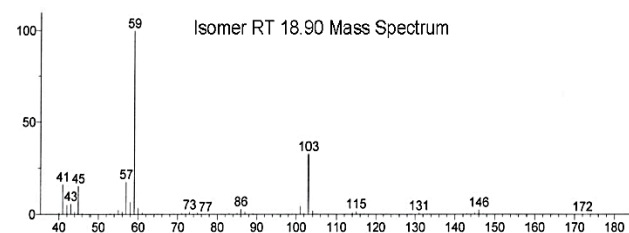
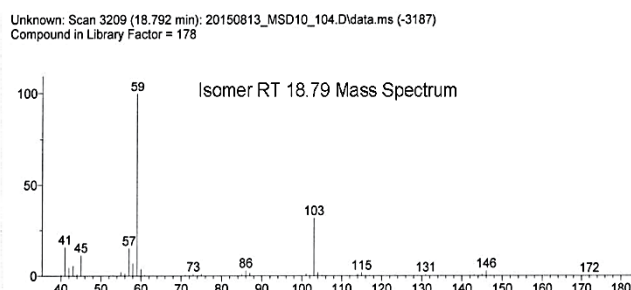
^b Peaks comprising $\geq 0.5\%$ of total area.

GC/MS Instrument Parameters:

Instrument / Ionization	Gas Chromatograph with Mass Spectrometer / Electron Impact
Solvent	Dichloromethane
Column	Rtx-5 MS, 30 m x 0.25 mm ID, 1- μ m film thickness
Carrier Gas	Helium at 2.0 mL/min
Oven Program	50°C, hold 0 min; ramp @ 5°C/min to 320°C, hold 5 min
Source Temperature	230°C
Auxiliary Temperature	250°C
Scan Range	40 – 550 amu
Injector Temperature	250°C
Injection Volume / Mode	1 μ L / Splitless
Data Analysis Software	MSD ChemStation, ver D.03.00.611, NIST Library ver 2.0d, build Dec 2005



Unknown: Scan 3229 (18.908 min): 20150813_MSD10_104.D\data.ms (-3176)
Compound in Library Factor = 284



Hit 1: 2-Propanol, 1-(2-butoxy-1-methylethoxy)-
C₁₀H₂₂O₃; MF: 913; RMF: 913; Prob 81.9%; CAS: 29911-28-2; Lib: mainlib; ID: 30378.

