

Chemical Information:

Name: alpha-1,2,3,4,5,6-Hexachlorocyclohexane Date of Analysis: 15 October 2009
CAS No.: 319-84-6 Supplier: Sigma-Aldrich
Tox21_ID No.: Tox21_200676 Lot No.: S34218
NTP_CID No.: 2032 MW: 290.83 g/mol

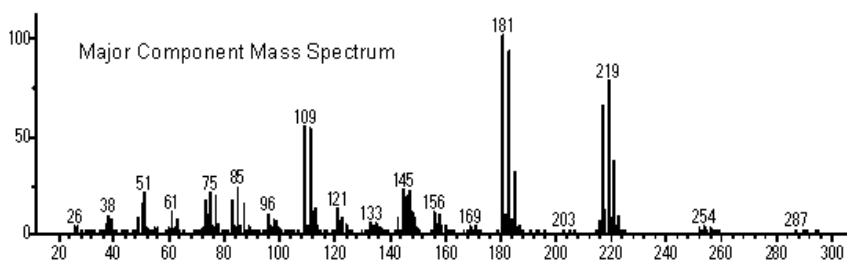
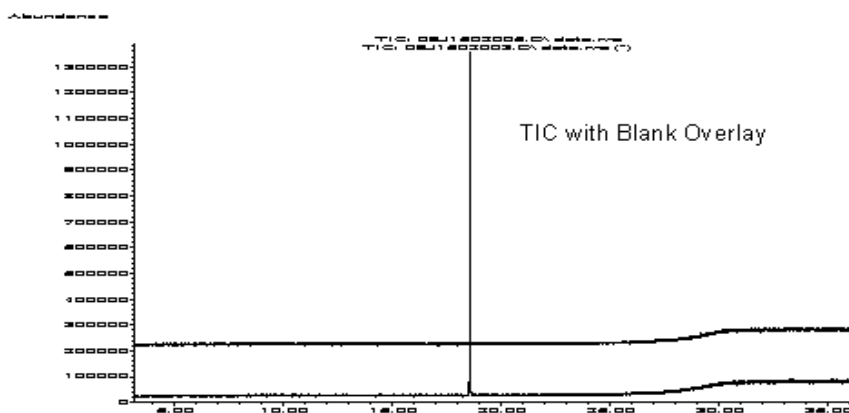
Purity and Identity Results:

| Peak Identity | Retention Time (min) | Purity (% Total Area) ^a |
|---|----------------------|------------------------------------|
| alpha-1,2,3,4,5,6-Hexachlorocyclohexane | 18.57 | 100.00 |

^a Peaks comprising $\geq 0.5\%$ of total area.

GC/MS Instrument Parameters:

| | |
|-------------------------|--|
| Instrument / Ionization | Gas Chromatograph with Mass Spectrometer / Electron Impact |
| Solvent | Dichloromethane (~ 1 mg/mL) |
| Column | J&W Scientific HP-5MS, 30 m x 0.25 mm ID, 0.25- μ m film thickness |
| Carrier Gas | Helium at 1.0 mL/min |
| Oven Program | 35°C, hold 2 min; ramp @ 10°C/min to 310°C, hold 7 min |
| Source Temperature | 230°C |
| Auxiliary Temperature | 150°C |
| Scan Range | 25 – 500 amu |
| Injector Temperature | 250°C |
| Injection Volume / Mode | 1 μ L / Split (100:1) |
| Data Analysis Software | MSD ChemStation, v D.03.00.SP1; NIST Library v 2.0f, build 10/08/2008 |



(Text File) Scan 2838 (18.569 min): 09J1502005.D\data.ms (-3086)

