

### Chemical Information:

Name: Glycol sulfite  
CAS No.: 3741-38-6  
Tox21\_ID No.: Tox21\_200499  
NTP\_CID No.: 4343

Supplier: Sigma-Aldrich  
Lot No.: 1365498  
MW: 108.12 g/mol

Date of Analysis: 04 September 2009

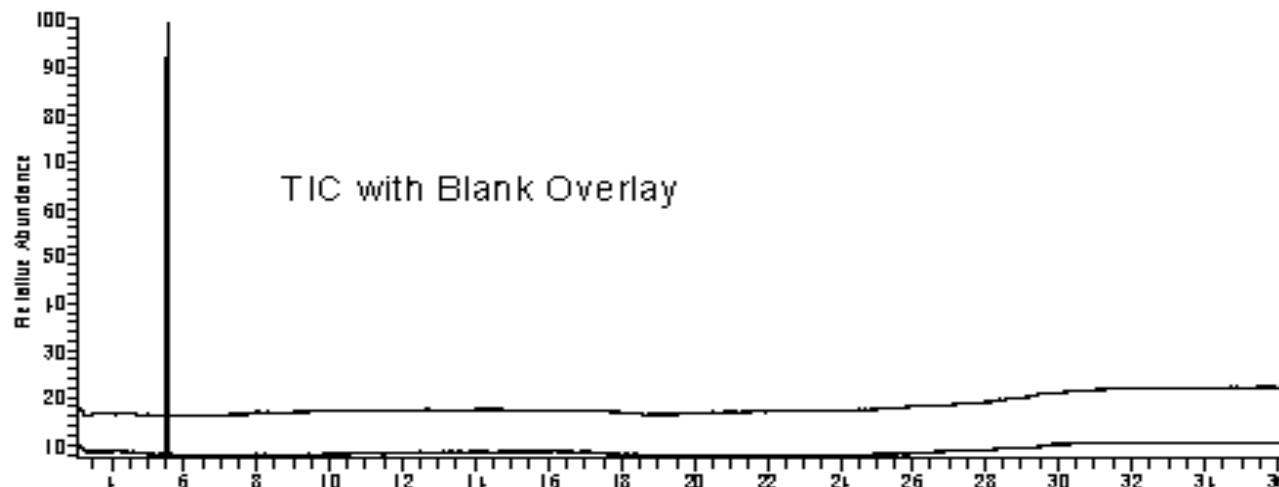
### Purity and Identity Results:

| Peak Identity  | Retention Time (min) | Purity (% Total Area) <sup>a</sup> |
|----------------|----------------------|------------------------------------|
| Glycol sulfite | 5.55                 | 100.00                             |

<sup>a</sup> Peaks comprising  $\geq 0.5\%$  of total area.

### GC/MS Instrument Parameters:

|                         |  |
|-------------------------|--|
| Instrument / Ionization | Gas Chromatograph with Mass Spectrometer / Electron Impact             |
| Solvent                 | Ethanol  |
| Column                  | J&W Scientific HP-5MS, 30 m x 0.25 mm ID, 0.25- $\mu$ m film thickness |
| Carrier Gas             | Helium at 1.0 mL/min   |
| Oven Program            | 35°C, hold 2 min; ramp @ 10°C/min to 310°C, hold 7 min                 |
| Source Temperature      | 250°C  |
| Auxiliary Temperature   | 250°C  |
| Scan Range              | 25 – 500 amu   |
| Injector Temperature    | 250°C  |
| Injection Volume / Mode | 1 $\mu$ L / Split (100:1)  |
| Data Analysis Software  | Xcalibur, v 1.2 and NIST Library v 2.0f, build 10/08/2008              |



06/04/07 05:00 RI: 553 RI: 1 SR: 1.1 A1: 5.55 NL: 50045  
1.0001 x 10<sup>6</sup> x 10<sup>6</sup> 1000 Fullms (100000000)

