

### Chemical Information:

Name: Isopropyl glycidyl ether  
CAS No.: 4016-14-2 Supplier: Sigma-Aldrich  
Tox21\_ID No.: Tox21\_200038 Lot No.: 11214EU  
NTP\_CID No.: 888 MW: 116.16 g/mol

Date of Analysis: 18 December 2008

### Purity and Identity Results:

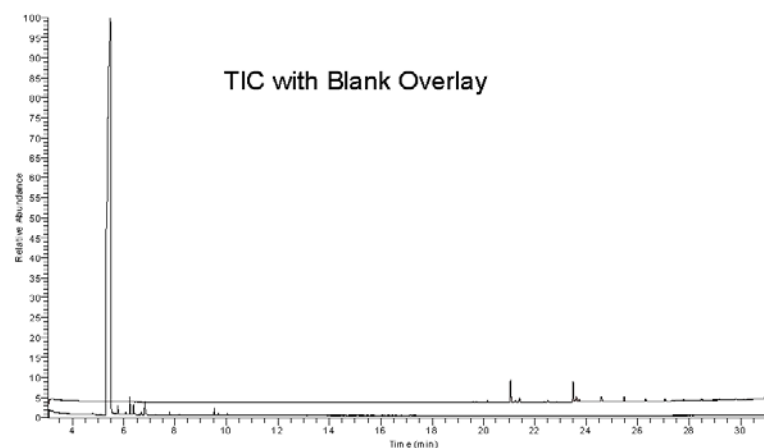
Peak Identity	Retention Time (min)	Purity (% Total Area) <sup>a</sup>
Isopropyl glycidyl ether	5.49	96.88
Unknown	6.23	0.66
unknown	6.82	0.56

<sup>a</sup> Peaks comprising  $\geq 0.5\%$  of total area.

### GC/MS Instrument Parameters:

Instrument / Ionization	Gas Chromatograph with Mass Spectrometer / Electron Impact
Solvent	Dichloromethane (~ 6 mg/mL)
Column	J&W Scientific HP-5MS, 30 m x 0.25 mm ID, 0.25- $\mu$ m film thickness
Carrier Gas	Helium at 1.0 mL/min
Oven Program	35°C, hold 2 min; ramp @ 10°C/min to 310°C, hold 2 min
Source Temperature	250°C
Auxiliary Temperature	250°C
Scan Range	25 – 350 amu
Injector Temperature	250°C
Injection Volume / Mode	2 $\mu$ L / Split (10:1)
Run Time	31.5 minutes
Data Analysis Software	Xcalibur, v 1.2 and NIST Library v 2.0, build 7/23/2008

RT: 3.05 - 31.50 SM 39



08118114 #278 RT: 5.32 AV: 1 SB: 2 5.29, 5.53 NL: 2.28E6  
T: (0.0) + cEI det=350.00 Full ms [25.00-350.00]

