

Chemical Information:

Name: Propanoyl chloride, 3-chloro-2,2-dimethyl-
CAS No.: 4300-97-4 Supplier: Sigma-Aldrich
Tox21_ID No.: Tox21_201227 Lot No.: 12729CE
NTP_CID No.: 3072 MW: 154.01 g/mol

Date of Analysis: 13 August 2015

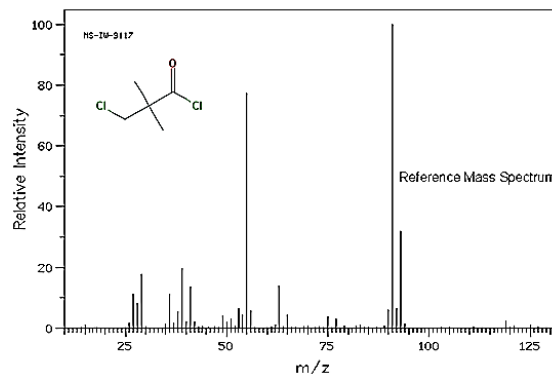
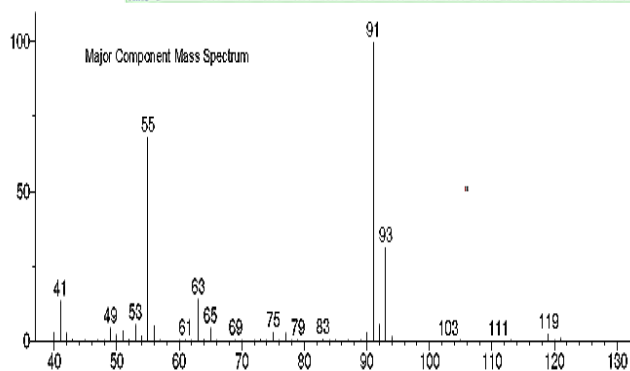
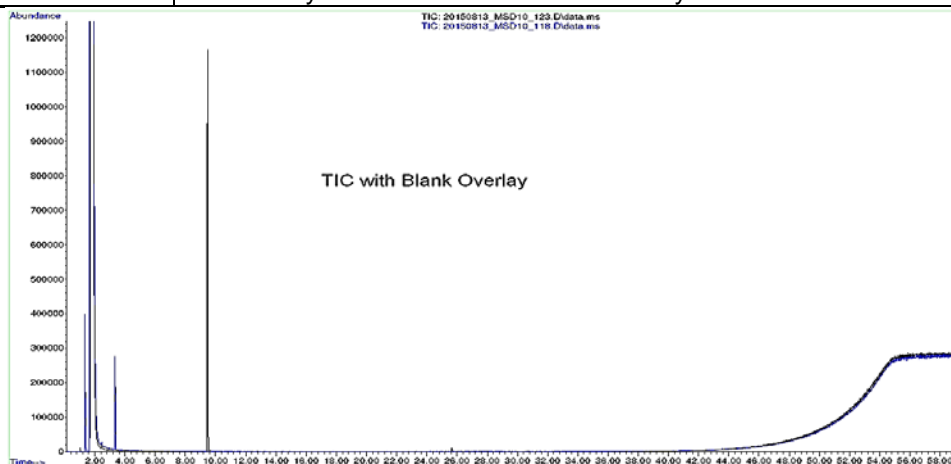
Purity and Identity Results:

Peak Identity	Retention Time (min)	Purity (% Total Area) ^a
Dichloromethane	1.80	Not Applicable
Propanoyl chloride, 3-chloro-2,2-dimethyl-	9.47	98.30
Unknown	25.65	0.96

^a Peaks comprising ≥ 0.5% of total area.

GC/MS Instrument Parameters:

Instrument / Ionization	Gas Chromatograph with Mass Spectrometer / Electron Impact
Solvent	Dichloromethane (~0.4 mg/mL)
Column	Rtx-5 MS, 30 m x 0.25 mm ID, 1-μm film thickness
Carrier Gas	Helium at 2.0 mL/min
Oven Program	50°C, hold 0 min; ramp @ 5°C/min to 320°C, hold 5 min
Source Temperature	230°C
Auxiliary Temperature	250°C
Scan Range	40 – 550 amu
Injector Temperature	250°C
Injection Volume / Mode	1 μL / Split (10:1)
Data Analysis Software	MassHunter GC/MS Acquisition B.07.02.1938 / Chemstation Enhanced Data Analysis F.01.01.2317 / NIST Library Version 2.2 Build 2014



SDBSWeb: <http://sdb.sdb.aist.go.jp>
(National Institute of Advanced Industrial
Science and Technology, 5 June 2017)

