

# Chemical Information:

Name: 2,3,4,5-Tetrachlorophenol  
CAS No.: 4901-51-3  
Tox21\_ID No.: Tox21\_200105  
NTP\_CID No.: 120

Supplier: Supelco  
Lot No.: LB33777

MW: 231.89 g/mol

Date of Analysis: 05 October 2007

# Purity and Identity Results:

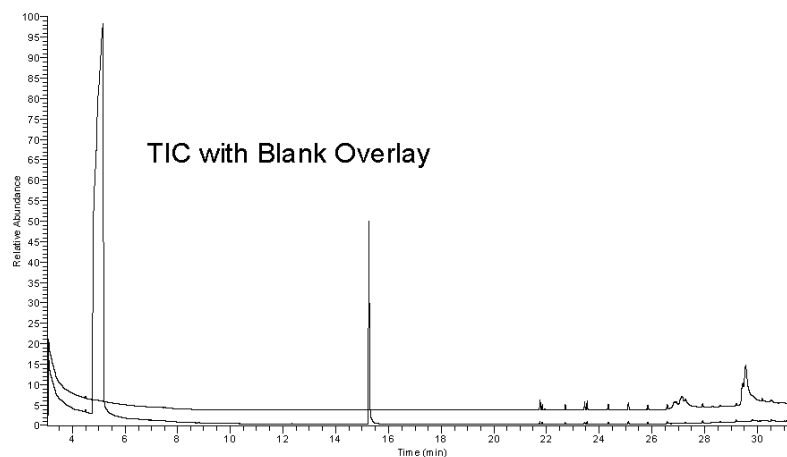
Peak Identity	Retention Time (min)	Purity (% Total Area) <sup>a</sup>
DMSO	5.17	Not applicable
2,3,4,5-Tetrachlorophenol	15.25	100.00

<sup>a</sup> Peaks comprising  $\geq 0.5\%$  of total area.

# GC/MS Instrument Parameters:

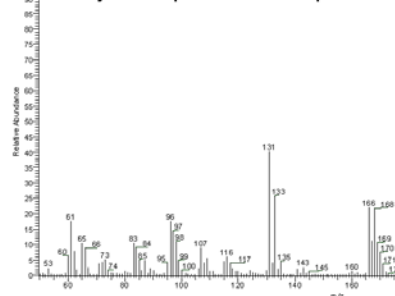
Instrument / Ionization	Gas Chromatograph / Mass Spectrometer / Electron Impact
Solvent	Dichloromethane (100 mM in DMSO, diluted 1/1000 with dichloromethane)
Column	J&W Scientific HP-5MS, 30 m x 0.25 mm ID, 0.25- $\mu$ m film thickness
Carrier Gas	Helium at 1.0 mL/min
Oven Program	35°C, hold 2 min; ramp @ 10°C/min to 310°C, hold 2 min
Source Temperature	250°C
Auxiliary Temperature	250°C
Scan Range	50 – 350 amu
Injector Temperature	250°C
Injection Volume / Mode	2 $\mu$ L / Splitless
Run Time	31.5 minutes
Data Analysis Software	Xcalibur, v 1.2 and NIST Library v 1.7, build 11/5/1999

RT: 3.05 - 31.50 SM 3G



07050501#1485 RT: 15.24 JUL 1 NL 1 2185  
T: 0.01 v = 6.6 data=5000 Full ms (50.000-350.00)

# Major Component Mass Spectrum



# NIST Reference Mass Spectrum

