

### Chemical Information:

Name: Naphthalene, 2,6-dimethyl-  
CAS No.: 581-42-0 Supplier: Sigma-Aldrich  
Tox21\_ID No.: Tox21\_200260 Lot No.: 02801EJ  
NTP\_CID No.: 3618 MW: 156.22 g/mol

Date of Analysis: 06 March 2015

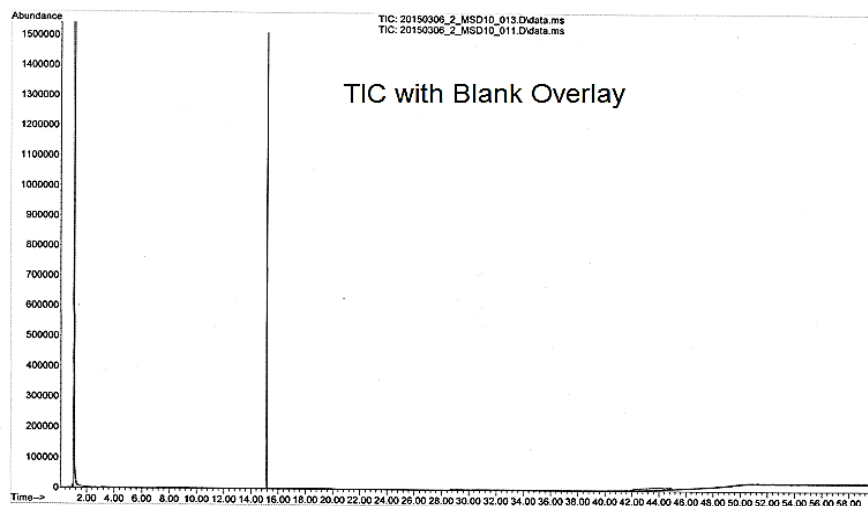
### Purity and Identity Results:

Peak Identity	Retention Time (min)	Purity (% Total Area) <sup>a</sup>
Naphthalene, 2,6-dimethyl-	15.152	100

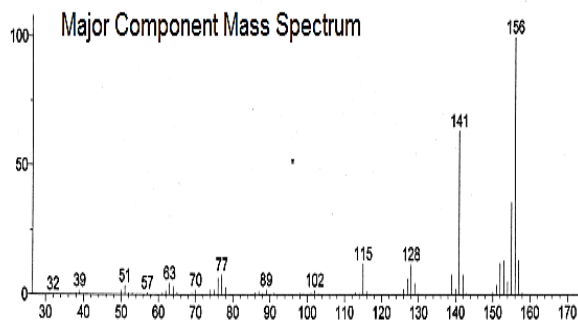
<sup>a</sup> Peaks comprising  $\geq 0.5\%$  of total area.

### GC/MS Instrument Parameters:

Instrument / Ionization	Gas Chromatograph with Mass Spectrometer / Electron Impact
Solvent	Ethanol
Column	J&W DB-1, 30 m x 0.25 mm ID, 0.25- $\mu$ m film thickness
Carrier Gas	Helium at 1.5 mL/min
Oven Program	50°C, hold 0 min; ramp @ 5°C/min to 300°C, hold 10 min
Source Temperature	230°C
Auxiliary Temperature	250°C
Scan Range	40 – 500 amu
Injector Temperature	250°C
Injection Volume / Mode	1 $\mu$ L / Splitless
Run Time	60.0 minutes
Data Analysis Software	MSD ChemStation, ver D.03.00.611, NIST Library ver 2.0d, build Dec 2005



Unknown: Scan 2788 (15.148 min): 20150306\_2\_MSD10\_013.D\data.ms  
Compound in Library Factor = 141



Hit 1: Naphthalene, 2,6-dimethyl-  
C12H12; MF: 949; RMF: 956; Prob 14.4%; CAS: 581-42-0; Lib: replib; ID: 20522.

