

Chemical Information:

Name: m-Bromotoluene
CAS No.: 591-17-3
Tox21_ID No.: Tox21_200334
NTP_CID No.: 924

Supplier: Sigma-Aldrich
Lot No.: 04717TB
MW: 171.03 g/mol

Date of Analysis: 05 February 2008

Purity and Identity Results:

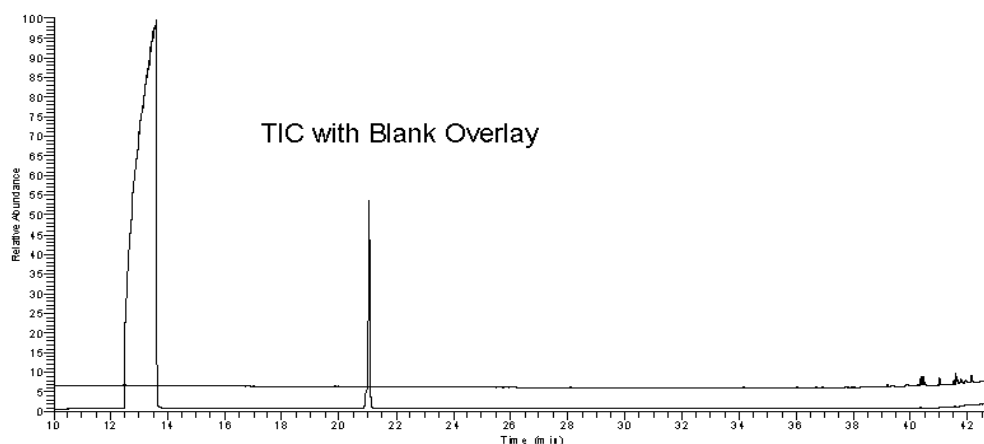
Peak Identity	Retention Time (min)	Purity (% Total Area) ^a
DMSO	13.59	Not applicable
m-Bromotoluene	21.05	99.45

^a Peaks comprising $\geq 0.5\%$ of total area.

GC/MS Instrument Parameters:

Instrument / Ionization	Gas Chromatograph / Mass Spectrometer / Electron Impact
Solvent	Dichloromethane (100 mM in DMSO, diluted 1/1000 with dichloromethane)
Column	J&W Scientific HP-5MS, 30 m x 0.25 mm ID, 0.25- μ m film thickness
Carrier Gas	Helium at 1.0 mL/min
Oven Program	10°C, hold 4 min; ramp @ 4°C/min to 120°C, hold 0 min; ramp @ 15°C/min to 300°C
Source Temperature	250°C
Auxiliary Temperature	250°C
Scan Range	35 – 220 amu
Injector Temperature	250°C
Injection Volume / Mode	2 μ L / Splitless
Run Time	43.5 minutes
Data Analysis Software	Xcalibur, v 1.2 and NIST Library v 1.7, build 11/5/1999

RT: 10.00 - 43.50



00050208#0045 RT: 21.05 MS: 1 53 2 2005-21-22 NL: 43766
T: (P)J+ c: ESI+M: 200.00 FWHM: [35.20-220.00]

