

Chemical Information:

Name: 2-Chloro-2-nitropropane
CAS No.: 594-71-8
Tox21_ID No.: Tox21_200336
NTP_CID No.: 231

Supplier: Sigma
Lot No.: S110305OB-14
MW: 123.54 g/mol

Date of Analysis: 16 February 2009

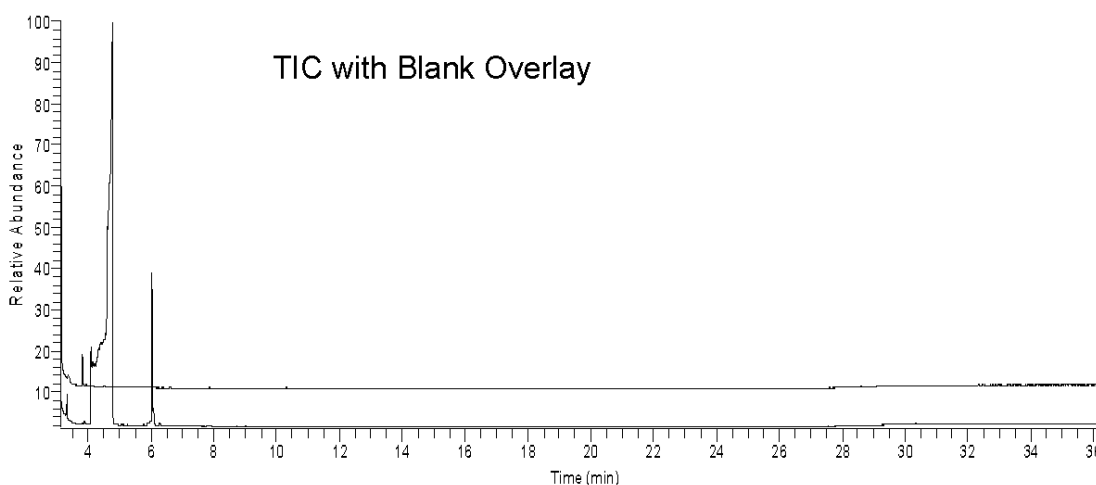
Purity and Identity Results:

| Peak Identity | Retention Time (min) | Purity (% Total Area) ^a |
|-------------------------|----------------------|------------------------------------|
| 2-Chloro-2-nitropropane | 4.78 | 99.80 |

^a Peaks comprising $\geq 0.5\%$ of total area.

GC/MS Instrument Parameters:

| | |
|-------------------------|--|
| Instrument / Ionization | Gas Chromatograph with Mass Spectrometer / Electron Impact |
| Solvent | Methanol |
| Column | J&W Scientific HP-5MS, 30 m x 0.25 mm ID, 0.25- μ m film thickness |
| Carrier Gas | Helium at 1.0 mL/min |
| Oven Program | 35°C, hold 2 min; ramp @ 10°C/min to 310°C, hold 7 min |
| Source Temperature | 250°C |
| Auxiliary Temperature | 250°C |
| Scan Range | 25 – 350 amu |
| Injector Temperature | 250°C |
| Injection Volume / Mode | 1 μ L / Split (10:1) |
| Run Time | 36.5 minutes |
| Data Analysis Software | Xcalibur, v 1.2 and NIST Library v 2.0, build 7/23/2008 |



00010014.D#04 RT: 4.82 ACQ: 1 DB: 2 x 01 4.88 HL 9.9288

11: 00010014.D#04 RT: 4.82 ACQ: 1 DB: 2 x 01 4.88 HL 9.9288

11: 00010014.D#04 RT: 4.82 ACQ: 1 DB: 2 x 01 4.88 HL 9.9288

11: 00010014.D#04 RT: 4.82 ACQ: 1 DB: 2 x 01 4.88 HL 9.9288

11: 00010014.D#04 RT: 4.82 ACQ: 1 DB: 2 x 01 4.88 HL 9.9288

11: 00010014.D#04 RT: 4.82 ACQ: 1 DB: 2 x 01 4.88 HL 9.9288

11: 00010014.D#04 RT: 4.82 ACQ: 1 DB: 2 x 01 4.88 HL 9.9288

11: 00010014.D#04 RT: 4.82 ACQ: 1 DB: 2 x 01 4.88 HL 9.9288

11: 00010014.D#04 RT: 4.82 ACQ: 1 DB: 2 x 01 4.88 HL 9.9288

11: 00010014.D#04 RT: 4.82 ACQ: 1 DB: 2 x 01 4.88 HL 9.9288

11: 00010014.D#04 RT: 4.82 ACQ: 1 DB: 2 x 01 4.88 HL 9.9288

11: 00010014.D#04 RT: 4.82 ACQ: 1 DB: 2 x 01 4.88 HL 9.9288

11: 00010014.D#04 RT: 4.82 ACQ: 1 DB: 2 x 01 4.88 HL 9.9288

11: 00010014.D#04 RT: 4.82 ACQ: 1 DB: 2 x 01 4.88 HL 9.9288

11: 00010014.D#04 RT: 4.82 ACQ: 1 DB: 2 x 01 4.88 HL 9.9288

11: 00010014.D#04 RT: 4.82 ACQ: 1 DB: 2 x 01 4.88 HL 9.9288

11: 00010014.D#04 RT: 4.82 ACQ: 1 DB: 2 x 01 4.88 HL 9.9288

11: 00010014.D#04 RT: 4.82 ACQ: 1 DB: 2 x 01 4.88 HL 9.9288

11: 00010014.D#04 RT: 4.82 ACQ: 1 DB: 2 x 01 4.88 HL 9.9288

11: 00010014.D#04 RT: 4.82 ACQ: 1 DB: 2 x 01 4.88 HL 9.9288

11: 00010014.D#04 RT: 4.82 ACQ: 1 DB: 2 x 01 4.88 HL 9.9288

11: 00010014.D#04 RT: 4.82 ACQ: 1 DB: 2 x 01 4.88 HL 9.9288

11: 00010014.D#04 RT: 4.82 ACQ: 1 DB: 2 x 01 4.88 HL 9.9288

11: 00010014.D#04 RT: 4.82 ACQ: 1 DB: 2 x 01 4.88 HL 9.9288

11: 00010014.D#04 RT: 4.82 ACQ: 1 DB: 2 x 01 4.88 HL 9.9288

11: 00010014.D#04 RT: 4.82 ACQ: 1 DB: 2 x 01 4.88 HL 9.9288

11: 00010014.D#04 RT: 4.82 ACQ: 1 DB: 2 x 01 4.88 HL 9.9288

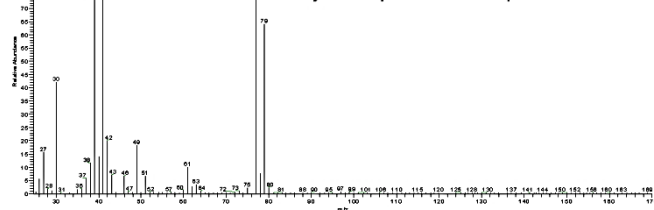
11: 00010014.D#04 RT: 4.82 ACQ: 1 DB: 2 x 01 4.88 HL 9.9288

11: 00010014.D#04 RT: 4.82 ACQ: 1 DB: 2 x 01 4.88 HL 9.9288

11: 00010014.D#04 RT: 4.82 ACQ: 1 DB: 2 x 01 4.88 HL 9.9288

11: 00010014.D#04 RT: 4.82 ACQ: 1 DB: 2 x 01 4.88 HL 9.9288

Major Component Mass Spectrum



NIST Reference Mass Spectrum

