

Chemical Information:

Name: 1-Chloro-1-nitropropane
CAS No.: 600-25-9 Supplier: Sigma-Aldrich
Tox21_ID No.: Tox21_200337 Lot No.: S110305OB-5
NTP_CID No.: 77 MW: 123.54 g/mol

Date of Analysis: 30 August 2010

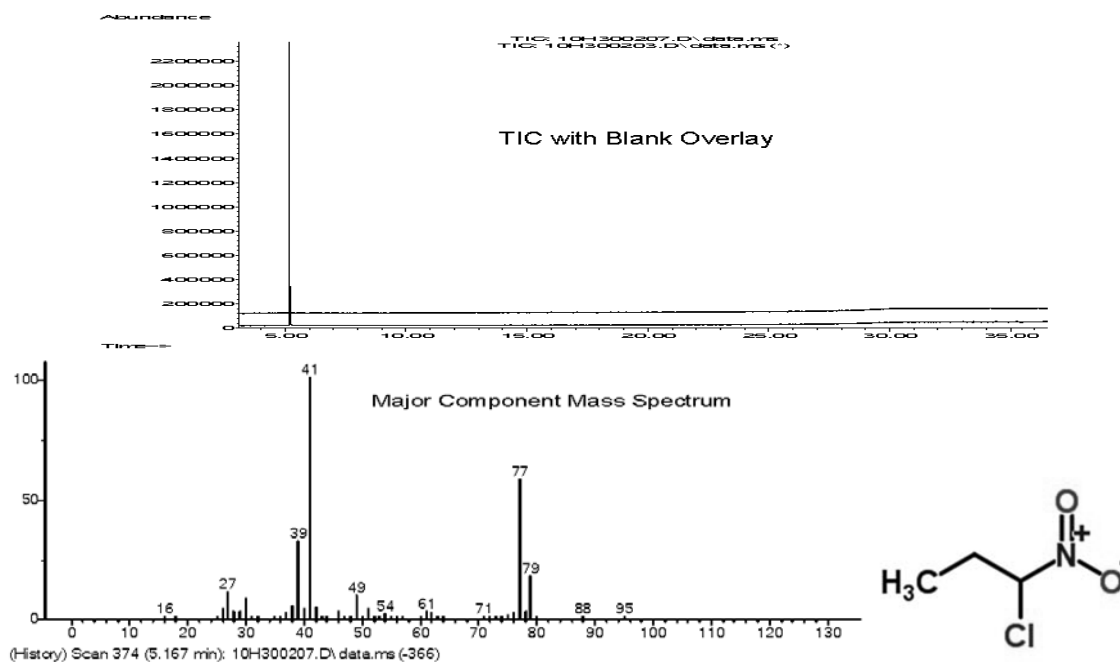
Purity and Identity Results:

| Peak Identity | Retention Time (min) | Purity (% Total Area) ^a |
|-------------------------|----------------------|------------------------------------|
| 1-Chloro-1-nitropropane | 5.17 | 100.00 |

^a Peaks comprising ≥ 0.5% of total area.

GC/MS Instrument Parameters:

| | |
|-------------------------|--|
| Instrument / Ionization | Gas Chromatograph with Mass Spectrometer / Electron Impact |
| Solvent | Dichloromethane |
| Column | J&W Scientific HP-5MS, 30 m x 0.25 mm ID, 0.25-μm film thickness |
| Carrier Gas | Helium at 1.0 mL/min |
| Oven Program | 35°C, hold 2 min; ramp @ 10°C/min to 310°C, hold 7 min |
| Source Temperature | 230°C |
| Auxiliary Temperature | 250°C |
| Scan Range | 15 – 500 amu |
| Injector Temperature | 250°C |
| Injection Volume / Mode | 1 μL / Split (100:1) |
| Data Analysis Software | MSD ChemStation v D.03.00.SP1, and NIST Library v 2.0f, build 10/08/2008 |



Mass ion (C₃H₆ClNO₂) = m/z 123

| m/z | Fragment |
|-----|---|
| 95 | CH ₂ ClNO ₂ |
| 88 | C ₃ H ₆ NO ₂ |
| 77 | C ₃ H ₆ Cl |
| 41 | C ₃ H ₅ |