

Chemical Information:

Name: Butane, 1,2-dichloro-
CAS No.: 616-21-7
Tox21_ID No.: Tox21_200147
NTP_CID No.: 2849

Supplier: Sigma-Aldrich
Lot No.: 12023LR
MW: 127.01 g/mol

Date of Analysis: 06 March 2015

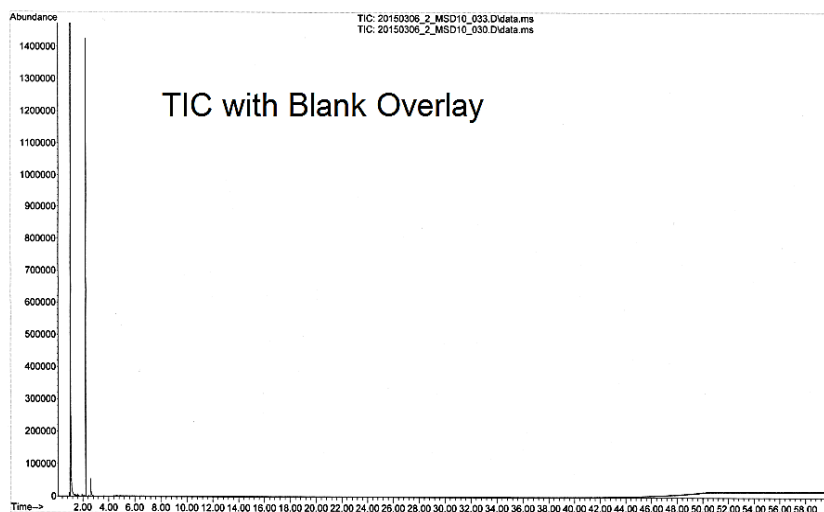
Purity and Identity Results:

Peak Identity	Retention Time (min)	Purity (% Total Area) ^a
Butane, 1,2-dichloro-	2.24	98.94

^a Peaks comprising $\geq 0.5\%$ of total area.

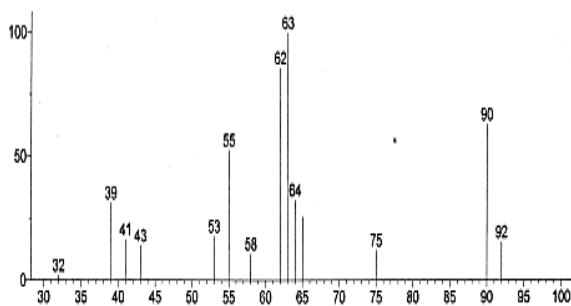
GC/MS Instrument Parameters:

Instrument / Ionization	Gas Chromatograph with Mass Spectrometer / Electron Impact
Solvent	Acetone
Column	J&W DB-1, 30 m x 0.25 mm ID, 0.25- μ m film thickness
Carrier Gas	Helium at 1.0 mL/min
Oven Program	50°C, hold 0 min; ramp @ 5°C/min to 300°C, hold 10 min
Source Temperature	230°C
Auxiliary Temperature	250°C
Scan Range	40 – 500 amu
Injector Temperature	250°C
Injection Volume / Mode	1 μ L / Splitless
Run Time	60.0 minutes
Data Analysis Software	MSD ChemStation, ver D.03.00.611, NIST Library ver 2.0d, build Dec 2005



Unknown: Scan 342 (1.935 min); 20150306_2_MSD10_033.D\data.ms (-360)
Compound in Library Factor = 192

Major Component Mass Spectrum



Hit 1: Butane, 2,3-dichloro-
C4H8Cl2; MF: 844; RMF: 872; Prob 48.5%; CAS: 7581-97-7; Lib: replib; ID: 6857.

NIST Reference Mass Spectrum

