

### Chemical Information:

Name: Benzene, 1-ethyl-4-methyl-  
CAS No.: 622-96-8 Supplier: Sigma-Aldrich  
Tox21\_ID No.: Tox21\_200472 Lot No.: 1296695  
NTP\_CID No.: 3624 MW: 120.19 g/mol

Date of Analysis: 29 July 2009

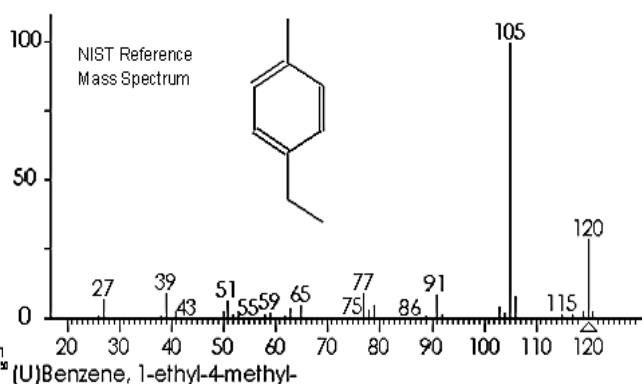
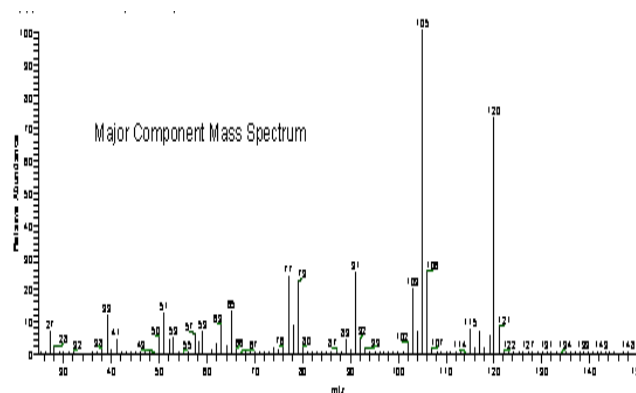
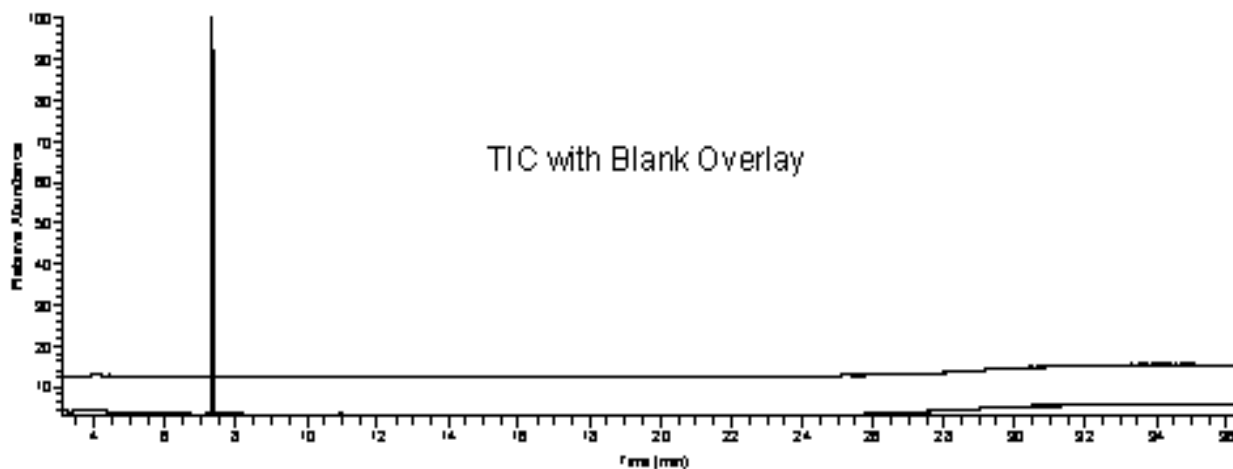
### Purity and Identity Results:

Peak Identity	Retention Time (min)	Purity (% Total Area) <sup>a</sup>
Benzene, 1-ethyl-4-methyl-	7.33	99.16
unknown	10.95	0.84

<sup>a</sup> Peaks comprising  $\geq 0.5\%$  of total area.

### GC/MS Instrument Parameters:

Instrument / Ionization	Gas Chromatograph with Mass Spectrometer / Electron Impact
Solvent	Ethanol (~ 400 $\mu\text{g/mL}$ )
Column	J&W Scientific HP-5MS, 30 m x 0.25 mm ID, 0.25- $\mu\text{m}$ film thickness
Carrier Gas	Helium at 1.0 mL/min
Oven Program	35°C, hold 2 min; ramp @ 10°C/min to 310°C, hold 7 min
Source Temperature	250°C
Auxiliary Temperature	250°C
Scan Range	25 – 500 amu
Injector Temperature	250°C
Injection Volume / Mode	1 $\mu\text{L}$ / Split (100:1)
Run Time	36.5 minutes
Data Analysis Software	Xcalibur, ver 1.2 and NIST Library ver 2.0f, build 10/08/2008



(U)Benzene, 1-ethyl-4-methyl-