

Chemical Information:

Name: 3,4-Dichlorobenzaldehyde
CAS No.: 6287-38-3 Supplier: Sigma-Aldrich
Tox21_ID No.: Tox21_200040 Lot No.: 12701BA
NTP_CID No.: 304 MW: 175.01 g/mol

Date of Analysis: 04 December 2007

Purity and Identity Results:

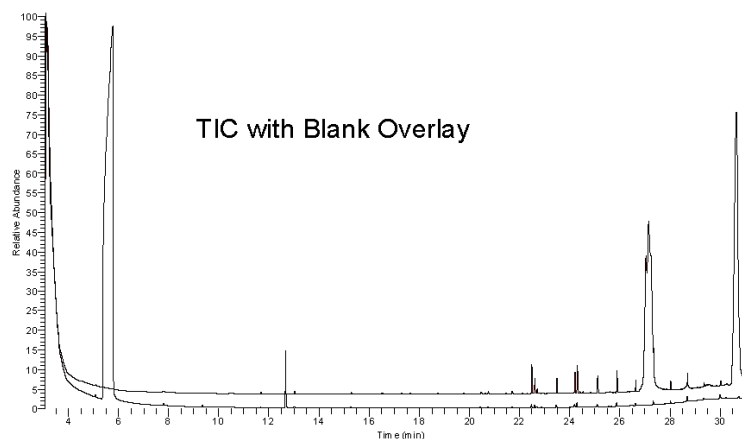
Peak Identity	Retention Time (min)	Purity (% Total Area) ^a
DMSO	5.78	Not applicable
3,4-Dichlorobenzaldehyde	12.68	99.41
unknown	22.90	0.59

^a Peaks comprising $\geq 0.5\%$ of total area.

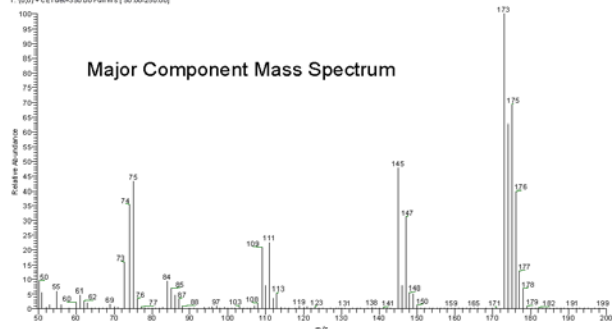
GC/MS Instrument Parameters:

Instrument / Ionization	Gas Chromatograph with Mass Spectrometer / Electron Impact
Solvent	Dichloromethane (100 mM in DMSO, diluted 1/1000 with dichloromethane)
Column	J&W Scientific HP-5MS, 30 m x 0.25 mm ID, 0.25- μ m film thickness
Carrier Gas	Helium at 1.0 mL/min
Oven Program	35°C, hold 2 min; ramp @ 10°C/min to 310°C, hold 2 min
Source Temperature	250°C
Auxiliary Temperature	250°C
Scan Range	50 – 250 amu
Injector Temperature	250°C
Injection Volume / Mode	2 μ L / Splitless
Run Time	31.5 minutes
Data Analysis Software	Xcalibur, v 1.2 and NIST Library v 1.7, build 11/5/1999

RT: 3.05 - 31.50 SM: 30



070407 #1161 RT: 12.68 SM: 2 12.64 12.74 NL: 9.7465
T: (0.0) - c(EI)det050.00 Full.ms (50.00-250.00)



NIST Reference Mass Spectrum

