

Chemical Information:

Name: 2,6-Dichlorobenzaldehyde
CAS No.: 83-38-5
Tox21_ID No.: Tox21_200742
NTP_CID No.: 189

Date of Analysis: 16 August 2007

Supplier: Sigma-Aldrich
Lot No.: 03012JU
MW: 175.01 g/mol

Purity and Identity Results:

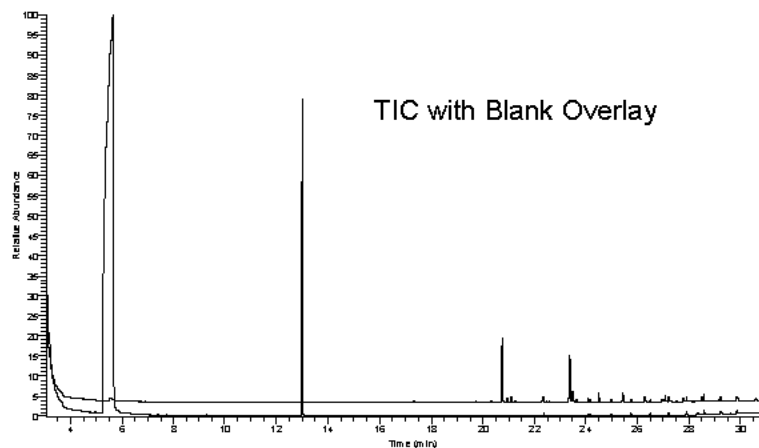
Peak Identity	Retention Time (min)	Purity (% Total Area) ^a
DMSO	5.66	Not applicable
2,6-Dichlorobenzaldehyde	13.00	99.86

^a Peaks comprising ≥ 0.5% of total area.

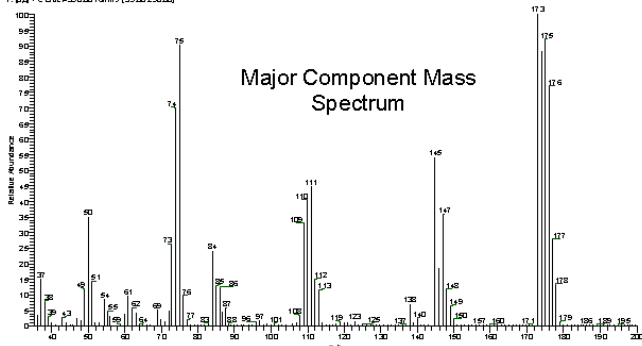
GC/MS Instrument Parameters:

Instrument / Ionization	ThermoFinnigan TraceGC with ThermoFinnigan TraceMS / Electron Impact
Solvent	Dichloromethane (100 mM in DMSO, diluted 1/1000 with dichloromethane)
Column	J&W Scientific HP-5MS, 30 m x 0.25 mm ID, 0.25-μm film thickness
Carrier Gas	Helium at 1.0 mL/min
Oven Program	35°C, hold 2 min; ramp @ 10°C/min to 310°C, hold 2 min
Source Temperature	250°C
Auxiliary Temperature	250°C
Scan Range	35 – 250 amu
Injector Temperature	250°C
Injection Volume / Mode	2 μL / Splitless
Run Time	31.5 minutes
Data Analysis Software	Xcalibur, v 1.2 and NIST Library v 1.7, build 11/5/1999

RT: 3.05 - 31.49 SM: 30



07/16/07 07:05:15 RT: 13.00 AC: 1 NL: 37666
T: 212 °C B: 6.43E+000 F: 1.00E+000



NIST Reference Mass Spectrum

