

Chemical Information:

Name: 2-Cyclohexen-1-one

Date of Analysis: 01 July 2009

CAS No.: 930-68-7

Supplier: Sigma-Aldrich

Tox21_ID No.: Tox21_200008

Lot No.: 03423AJ

NTP_CID No.: 237

MW: 96.13 g/mol

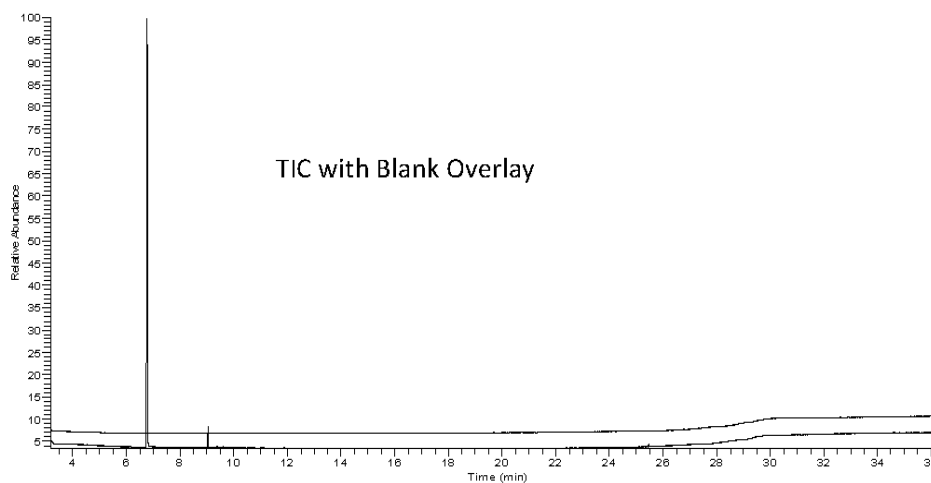
Purity and Identity Results:

Peak Identity	Retention Time (min)	Purity (% Total Area) ^a
2-Cyclohexen-1-one	6.78	96.94
unknown	9.05	3.06

^a Peaks comprising ≥ 0.5% of total area.

GC/MS Instrument Parameters:

Instrument / Ionization	Gas Chromatograph with Mass Spectrometer / Electron Impact
Solvent	Ethanol (~ 1 mg/mL)
Column	J&W Scientific HP-5MS, 30 m x 0.25 mm ID, 0.25-μm film thickness
Carrier Gas	Helium at 1.0 mL/min
Oven Program	35°C, hold 2 min; ramp @ 10°C/min to 310°C, hold 7 min
Source Temperature	250°C
Auxiliary Temperature	250°C
Scan Range	25 – 500 amu
Injector Temperature	250°C
Injection Volume / Mode	1 μL / Split (100:1)
Run Time	36.5 minutes
Data Analysis Software	Xcalibur ver 1.2 and NIST Library ver 2.0f, build 10/8/2008


00001704#438 RT: 6.74 AU: 1 SB: 6.71-6.73, 6.91-6.93 NL: 1.0668
7: (5.0) x 1.0 (exp 250.00 Full ms) [25.00-500.00]
