

Chemical Information:

Name: 2,3,5-Trichlorophenol
CAS No.: 933-78-8
Tox21_ID No.: Tox21_200624
NTP_CID No.: 127

Supplier: Supelco
Lot No.: LB32751
MW: 197.45 g/mol

Date of Analysis: 29 November 2007

Purity and Identity Results:

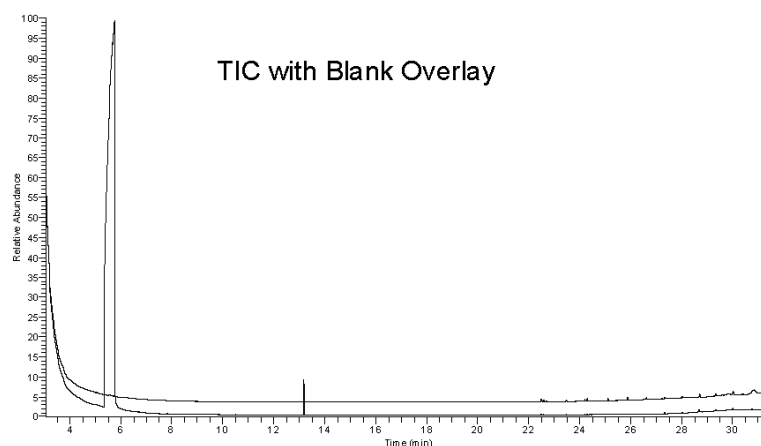
Peak Identity	Retention Time (min)	Purity (% Total Area) ^a
DMSO	5.75	Not applicable
2,3,5-Trichlorophenol	13.17	99.45
unknown	22.90	0.55

^a Peaks comprising $\geq 0.5\%$ of total area.

GC/MS Instrument Parameters:

Instrument / Ionization	Gas Chromatograph with Mass Spectrometer / Electron Impact
Solvent	Dichloromethane (100 mM in DMSO, diluted 1/1000 with dichloromethane)
Column	J&W Scientific HP-5MS, 30 m x 0.25 mm ID, 0.25- μ m film thickness
Carrier Gas	Helium at 1.0 mL/min
Oven Program	35°C, hold 2 min; ramp @ 10°C/min to 310°C, hold 2 min
Source Temperature	250°C
Auxiliary Temperature	250°C
Scan Range	35 – 250 amu
Injector Temperature	250°C
Injection Volume / Mode	2 μ L / Splitless
Run Time	31.5 minutes
Data Analysis Software	Xcalibur, v 1.2 and NIST Library v 1.7, build 11/5/1999

RT: 3.05 - 31.51 SM 3G



07/29/06 #2663 RT: 13.17 Av: 1 NL 6.3265
T: (0.0) + (-0.0) sec=300.00 Full m/z [35.00-200.00]

