

# Chemical Information:

Name: o-Bromotoluene  
CAS No.: 95-46-5  
Tox21\_ID No.: Tox21\_200379  
NTP\_CID No.: 1092

Supplier: Sigma-Aldrich  
Lot No.: 02823LC  
MW: 171.03 g/mol

Date of Analysis: 29 March 2007

# Purity and Identity Results:

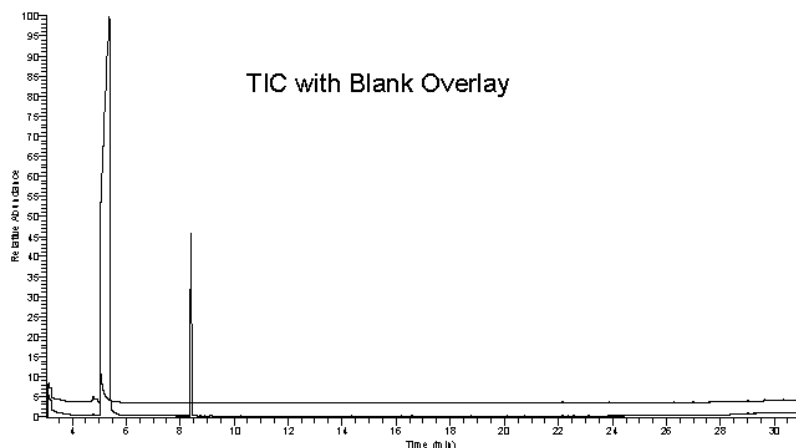
Peak Identity	Retention Time (min)	Purity (% Total Area) <sup>a</sup>
DMSO	5.38	Not applicable
o-Bromotoluene	8.40	99.73

<sup>a</sup> Peaks comprising ≥ 0.5% of total area.

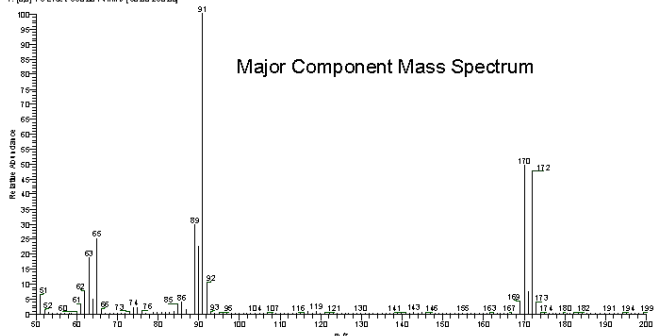
# GC/MS Instrument Parameters:

Instrument / Ionization	ThermoFinnigan TraceGC with ThermoFinnigan TraceMS / Electron Impact
Solvent	Dichloromethane (100 mM in DMSO, diluted 1/1000 with dichloromethane)
Column	J&W Scientific HP-5MS, 30 m x 0.25 mm ID, 0.25-μm film thickness
Carrier Gas	Helium at 1.0 mL/min
Oven Program	35°C, hold 2 min; ramp @ 10°C/min to 310°C, hold 2 min
Source Temperature	250°C
Auxiliary Temperature	250°C
Scan Range	50 – 250 amu
Injector Temperature	250°C
Injection Volume / Mode	2 μL / Splitless
Run Time	31.5 minutes
Data Analysis Software	Xcalibur, v 1.2 and NIST Library v 1.7, build 11/5/1999

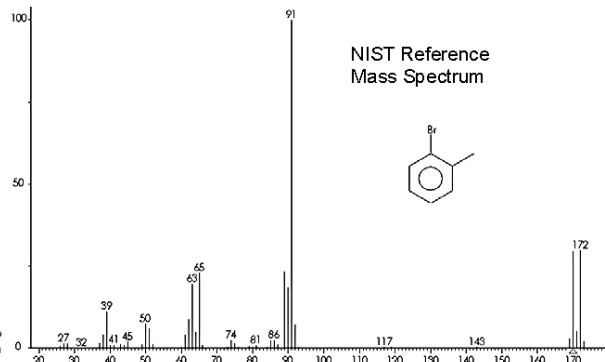
RT: 3.05 - 31.45 SM: 30



07-02-06 06:45 RT: 8.40 AC: 1 NL: 3.1305  
T: (00) + o-Bromotoluene (50.00-250.00)



Major Component Mass Spectrum



NIST Reference Mass Spectrum

