

Chemical Information:

Name: Benzene, 1,4-bis(1-methylethyl)-
CAS No.: 100-18-5 Supplier: Sigma-Aldrich
Tox21_ID No.: Tox21_201380 Lot No.: 20213KB
NTP_CID No.: 2603 MW: 162.27 g/mol

Date of Analysis: 19 June 2009

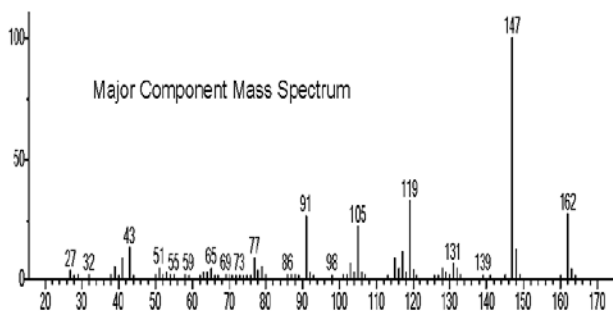
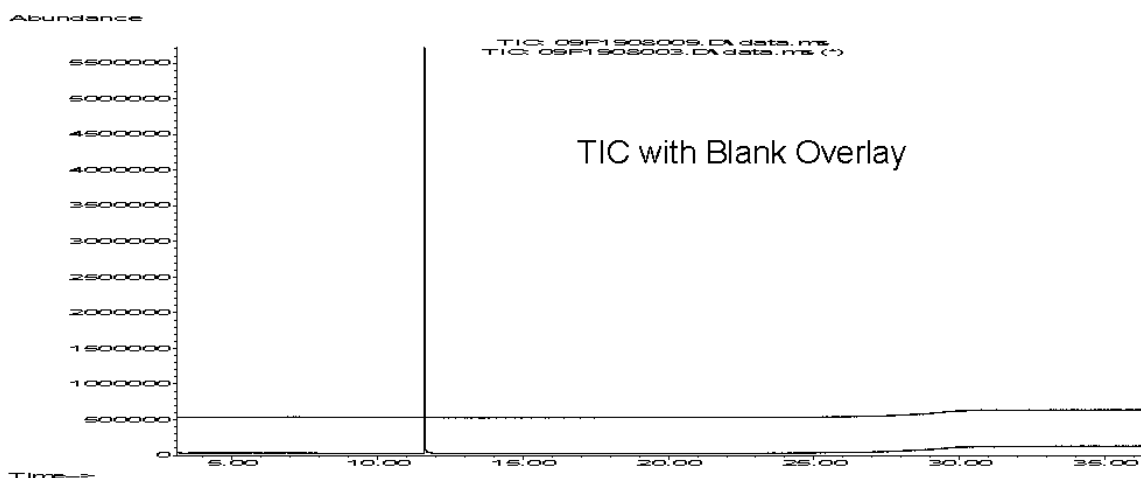
Purity and Identity Results:

Peak Identity	Retention Time (min)	Purity (% Total Area) ^a
Benzene, 1,4-bis(1-methylethyl)-	11.62	100.00

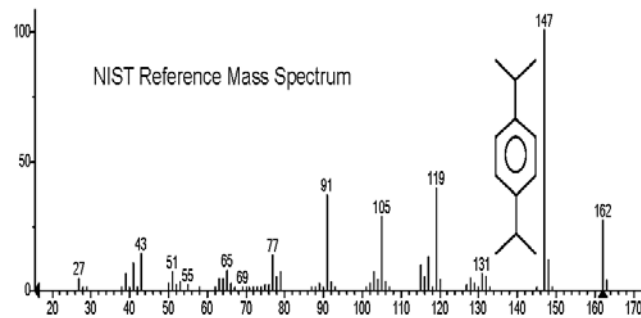
^a Peaks comprising $\geq 0.5\%$ of total area.

GC/MS Instrument Parameters:

Instrument / Ionization	Gas Chromatograph with Mass Spectrometer / Electron Impact
Solvent	Ethanol (~ 1 mg/mL)
Column	J&W Scientific HP-5MS, 30 m x 0.25 mm ID, 0.25- μ m film thickness
Carrier Gas	Helium at 1.0 mL/min
Oven Program	35°C, hold 2 min; ramp @ 10°C/min to 310°C, hold 7 min
Source Temperature	230°C
Auxiliary Temperature	250°C
Scan Range	25 – 500 amu
Injector Temperature	250°C
Injection Volume / Mode	1 μ L / Split (100:1)
Run Time	36.5 minutes
Data Analysis Software	MSD ChemStation ver D.03.00.SP1; NIST Library ver 2.0f, build 10/8/2008



(Text File) Scan 1567 (11.618 min): 09F1908009.D\data.ms



(mainlib) Benzene, 1,4-bis(1-methylethyl)-