

### Chemical Information:

|               |                     |           |              |
|---------------|---------------------|-----------|--------------|
| Name:         | Cyclohexanone oxime |           |              |
| CAS No.:      | 100-64-1            | Supplier: | NTP          |
| Tox21_ID No.: | Tox21_202143        | Lot No.:  | 02616LT      |
| NTP_CID No.:  | 665                 | MW:       | 113.16 g/mol |

Date of Analysis: 06 March 2009

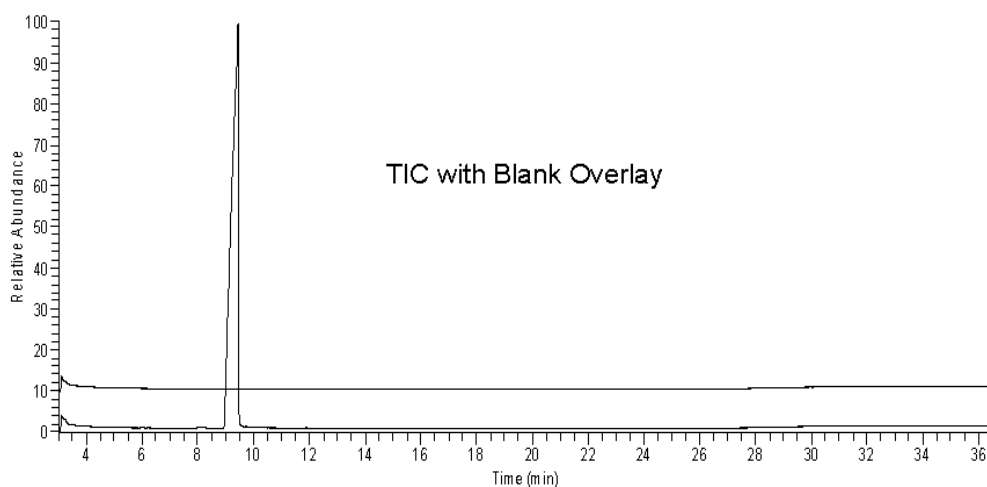
### Purity and Identity Results:

| Peak Identity       | Retention Time (min) | Purity (% Total Area) <sup>a</sup> |
|---------------------|----------------------|------------------------------------|
| Cyclohexanone oxime | 9.45                 | 99.95                              |

<sup>a</sup> Peaks comprising  $\geq 0.5\%$  of total area.

### GC/MS Instrument Parameters:

|                         |  |
|-------------------------|--|
| Instrument / Ionization | Gas Chromatograph with Mass Spectrometer / Electron Impact       |
| Solvent                 | Dichloromethane  |
| Column                  | J&W Scientific HP-5MS, 30 m x 0.25 mm ID, 0.25-µm film thickness |
| Carrier Gas             | Helium at 1.0 mL/min   |
| Oven Program            | 35°C, hold 2 min; ramp @ 10°C/min to 310°C, hold 7 min           |
| Source Temperature      | 250°C  |
| Auxiliary Temperature   | 250°C  |
| Scan Range              | 25 – 350 amu   |
| Injector Temperature    | 250°C  |
| Injection Volume / Mode | 1 µL / Splitless   |
| Run Time                | 36.5 minutes   |
| Data Analysis Software  | Xcalibur, v 1.2 and NIST Library v 1.7, build 11/5/1999          |



D006D48716 RT:0.97 AM:1 SE:2 8.89,9.64 NL:2.71BS  
T (D P) = c Ridel+360.00 Fullms [26.00-360.00]

