

Chemical Information:

Name: p-Chlorophenol
CAS No.: 106-48-9
Tox21_ID No.: Tox21_201704
NTP_CID No.: 1160

Date of Analysis: 18 December 2008

Supplier: Sigma-Aldrich
Lot No.: 1384810
MW: 128.56 g/mol

Purity and Identity Results:

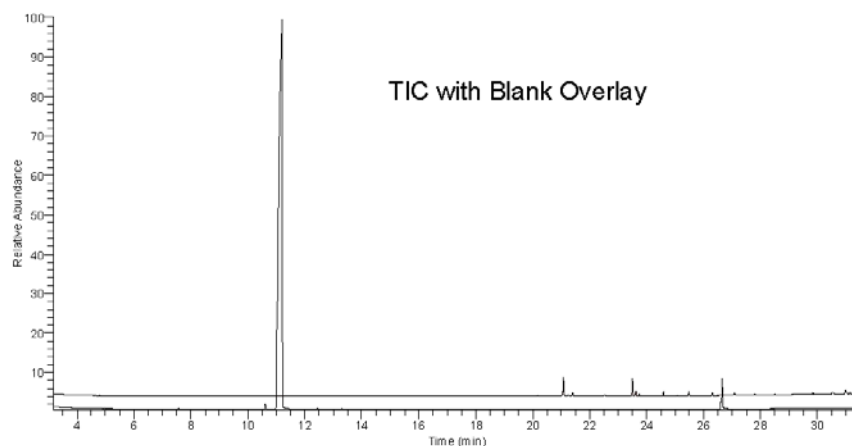
Peak Identity	Retention Time (min)	Purity (% Total Area) ^a
p-Chlorophenol	11.21	97.37
unknown	26.65	2.23

^a Peaks comprising $\geq 0.5\%$ of total area.

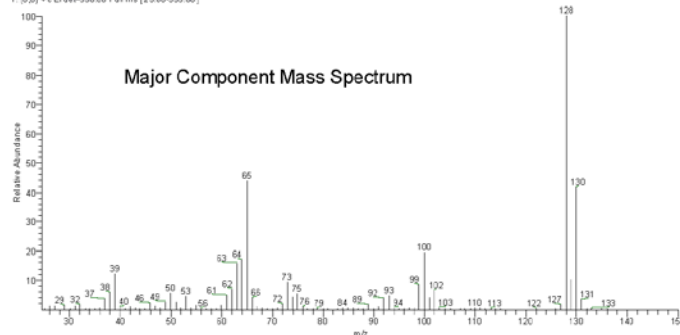
GC/MS Instrument Parameters:

Instrument / Ionization	Gas Chromatograph with Mass Spectrometer / Electron Impact
Solvent	Dichloromethane (~ 6 mg/mL)
Column	J&W Scientific HP-5MS, 30 m x 0.25 mm ID, 0.25- μ m film thickness
Carrier Gas	Helium at 1.0 mL/min
Oven Program	35°C, hold 2 min; ramp @ 10°C/min to 310°C, hold 2 min
Source Temperature	250°C
Auxiliary Temperature	250°C
Scan Range	25 – 350 amu
Injector Temperature	250°C
Injection Volume / Mode	2 μ L / Split (10:1)
Run Time	31.5 minutes
Data Analysis Software	Xcalibur, v 1.2 and NIST Library v 2.0, build 7/23/2008

RT: 3.15 - 31.49 SM 3G



001805 #962 RT: 11.02 AV: 1 SB: 2 1099, 1125 NL: 24265
T: (J, J) * c: E: 449350.00 Full ms [25.00-350.00]



NIST Reference Mass Spectrum

