

Chemical Information:

Name: Glycidyl methacrylate
CAS No.: 106-91-2
Tox21_ID No.: Tox21_201494
NTP_CID No.: 835

Supplier: Sigma-Aldrich
Lot No.: 07308DC
MW: 142.15 g/mol

Date of Analysis: 23 August 2007

Purity and Identity Results:

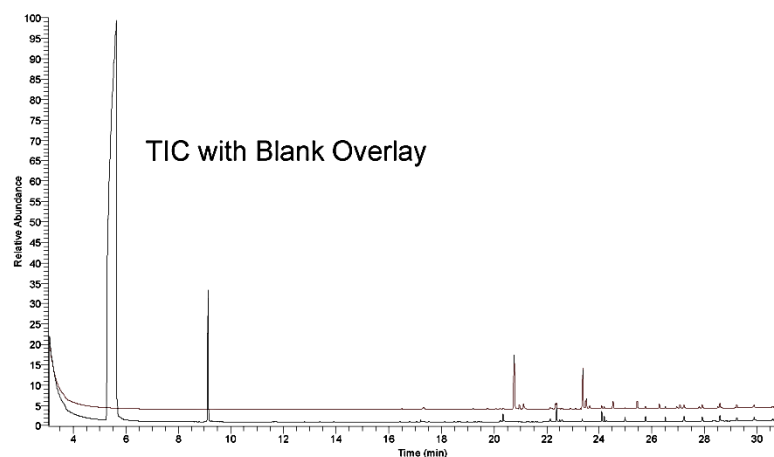
Peak Identity	Retention Time (min)	Purity (% Total Area) ^a
DMSO	5.65	Not applicable
Glycidyl methacrylate	9.13	96.42
unknown	17.21	1.50

^a Peaks comprising ≥ 0.5% of total area.

GC/MS Instrument Parameters:

Instrument / Ionization	ThermoFinnigan TraceGC with ThermoFinnigan TraceMS / Electron Impact
Solvent	Dichloromethane (100 mM in DMSO, diluted 1/1000 with dichloromethane)
Column	J&W Scientific HP-5MS, 30 m x 0.25 mm ID, 0.25-μm film thickness
Carrier Gas	Helium at 1.0 mL/min
Oven Program	35°C, hold 2 min; ramp @ 10°C/min to 310°C, hold 2 min
Source Temperature	250°C
Auxiliary Temperature	250°C
Scan Range	25 – 200 amu
Injector Temperature	250°C
Injection Volume / Mode	2 μL / Splitless
Run Time	31.5 minutes
Data Analysis Software	Xcalibur, v 1.2 and NIST Library v 1.7, build 11/5/1999

RT: 3.05 - 31.49 SM: 3G



07/23/13 #734 RT: 9.12 AU: 1 SB: 2 9.09, 9.17 NL: 4.32E5
T: (0.0) - c EI det=250.00 Full ms [25.00-200.00]

