

Chemical Information:

Name: 1,2-Dibromoethane
CAS No.: 106-93-4
Tox21_ID No.: Tox21_201427
NTP_CID No.: 28

Supplier: Sigma-Aldrich
Lot No.: 01628EC
MW: 187.86 g/mol

Date of Analysis: 10 March 2009

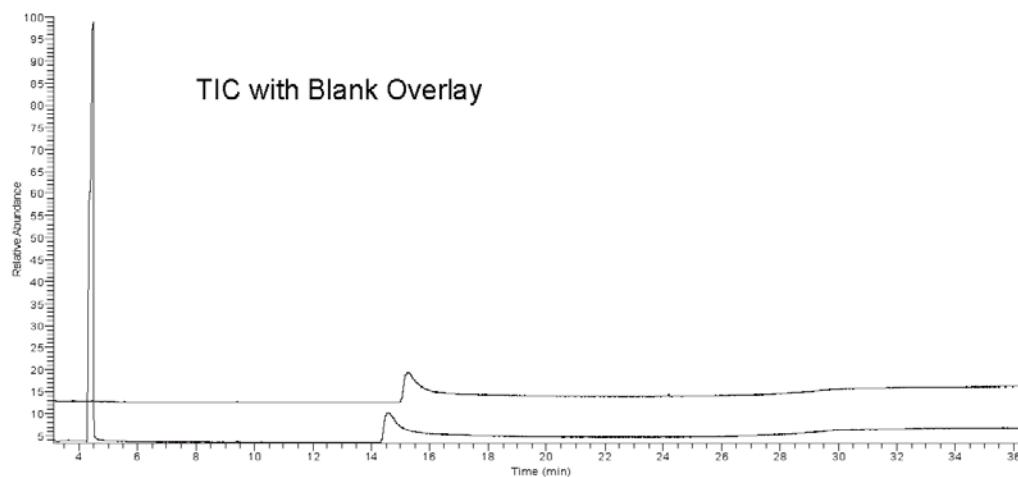
Purity and Identity Results:

Peak Identity	Retention Time (min)	Purity (% Total Area) ^a
1,2-Dibromoethane	4.48	100.00

^a Peaks comprising $\geq 0.5\%$ of total area.

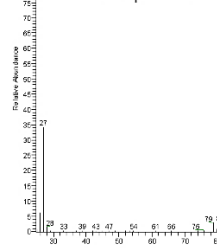
GC/MS Instrument Parameters:

Instrument / Ionization	Gas Chromatograph with Mass Spectrometer / Electron Impact
Solvent	Methanol (~ 2 mg/mL)
Column	J&W Scientific HP-5MS, 30 m x 0.25 mm ID, 0.25- μ m film thickness
Carrier Gas	Helium at 1.0 mL/min
Oven Program	35°C, hold 2 min; ramp @ 10°C/min to 310°C, hold 7 min
Source Temperature	250°C
Auxiliary Temperature	250°C
Scan Range	25 – 350 amu
Injector Temperature	250°C
Injection Volume / Mode	1 μ L / Split (10:1)
Run Time	36.5 minutes
Data Analysis Software	Xcalibur, v 1.2 and NIST Library v 2.0, build 7/23/2008



06/12/04 #155 RT: 4.29 AC: 1 SE: 2.4, 26.457 HL: 7.785
T: 0.00 + e-El: 0.00 Full m/z: [25.00-350.00]

Major Component
Mass Spectrum



NIST Reference
Mass Spectrum

