

### Chemical Information:

Name: Ethylene glycol monoethyl ether (EGMEE) Date of Analysis: 30 August 2010  
CAS No.: 110-80-5 Supplier: Sigma-Aldrich  
Tox21\_ID No.: Tox21\_201697 Lot No.: 08725AH  
NTP\_CID No.: 240 MW: 90.12 g/mol

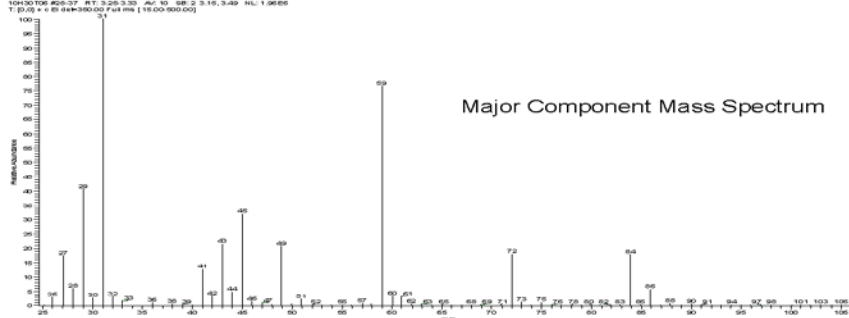
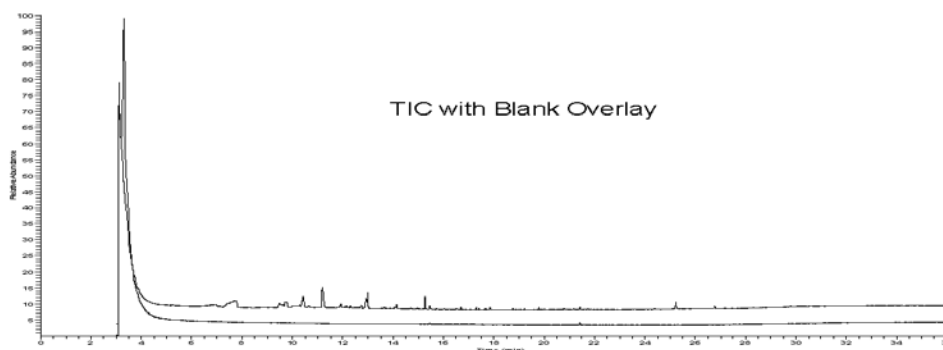
### Purity and Identity Results:

Peak Identity	Retention Time (min)	Purity (% Total Area) <sup>a</sup>
Ethylene glycol monoethyl ether	3.32	100.00

<sup>a</sup> Peaks comprising  $\geq 0.5\%$  of total area.

### GC/MS Instrument Parameters:

Instrument / Ionization	Gas Chromatograph with Mass Spectrometer / Electron Impact
Solvent	Dichloromethane
Column	J&W Scientific HP-5MS, 30 m x 0.25 mm ID, 0.25- $\mu$ m film thickness
Carrier Gas	Helium at 1.0 mL/min
Oven Program	35°C, hold 2 min; ramp @ 10°C/min to 310°C, hold 7 min
Source Temperature	250°C
Auxiliary Temperature	250°C
Scan Range	15 – 500 amu
Injector Temperature	250°C
Injection Volume / Mode	1 $\mu$ L / Split (100:1)
Data Analysis Software	Xcalibur ver 1.2, and NIST Library ver 2.0f, build 10/08/2008



Ions observed at m/z 49, 51, 84, and 86 are due to tailing of solvent into the sample spectrum.

