

Chemical Information:

Name: bis(2-Chloroethyl)ether
CAS No.: 111-44-4
Tox21_ID No.: Tox21_202074
NTP_CID No.: 553

Supplier: Sigma-Aldrich
Lot No.: 09810DE
MW: 143.01 g/mol

Date of Analysis: 18 December 2008

Purity and Identity Results:

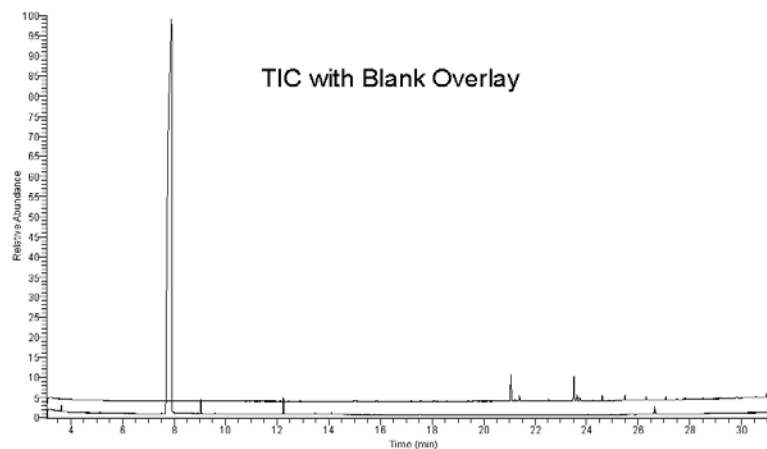
Peak Identity	Retention Time (min)	Purity (% Total Area) ^a
bis(2-Chloroethyl)ether	7.90	97.53
unknown	9.03	0.53
unknown	12.25	0.64

^a Peaks comprising ≥ 0.5% of total area.

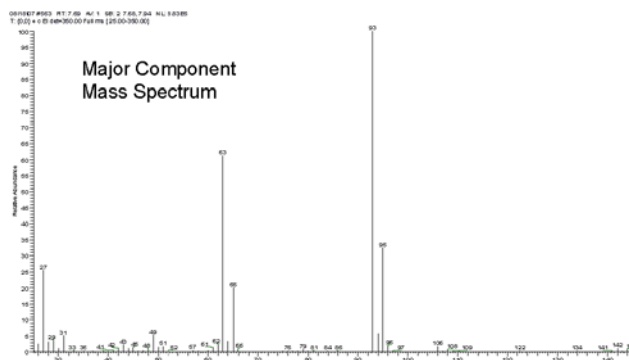
GC/MS Instrument Parameters:

Instrument / Ionization	Gas Chromatograph with Mass Spectrometer / Electron Impact
Solvent	Dichloromethane (~ 6 mg/mL)
Column	J&W Scientific HP-5MS, 30 m x 0.25 mm ID, 0.25-μm film thickness
Carrier Gas	Helium at 1.0 mL/min
Oven Program	35°C, hold 2 min; ramp @ 10°C/min to 310°C, hold 2 min
Source Temperature	250°C
Auxiliary Temperature	250°C
Scan Range	25 – 350 amu
Injector Temperature	250°C
Injection Volume / Mode	2 μL / Split (10:1)
Run Time	31.5 minutes
Data Analysis Software	Xcalibur, v 1.2 and NIST Library v 2.0, build 7/23/2008

RT: 3.05 - 31.49 SM: 30



Major Component Mass Spectrum



NIST Reference Mass Spectrum

