

### Chemical Information:

Name: Indole  
 CAS No.: 120-72-9  
 Tox21\_ID No.: Tox21\_201677  
 NTP\_CID No.: 4382

Date of Analysis: 06 August 2009

Supplier: Sigma-Aldrich  
 Lot No.: 00506BJ  
 MW: 117.15 g/mol

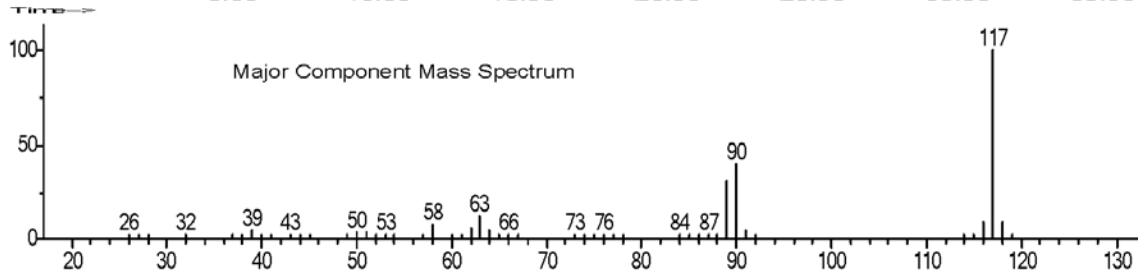
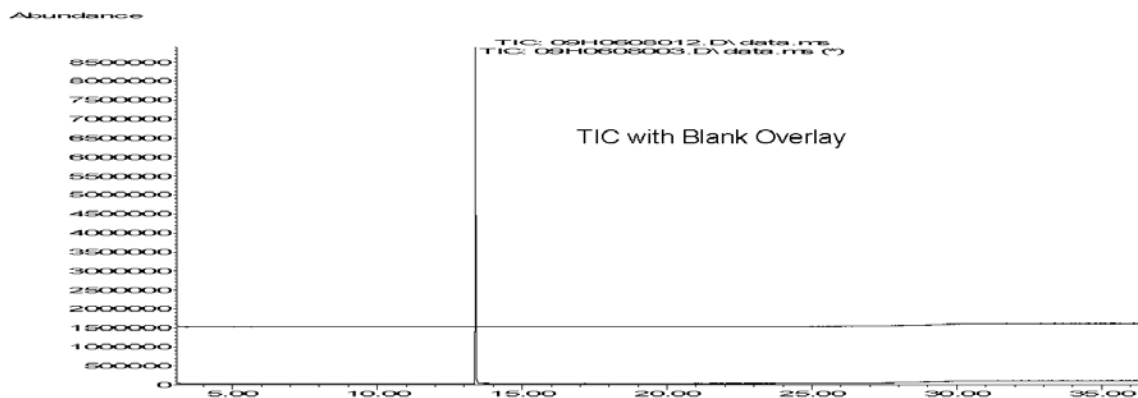
### Purity and Identity Results:

Peak Identity	Retention Time (min)	Purity (% Total Area) <sup>a</sup>
Indole	13.39	100.00

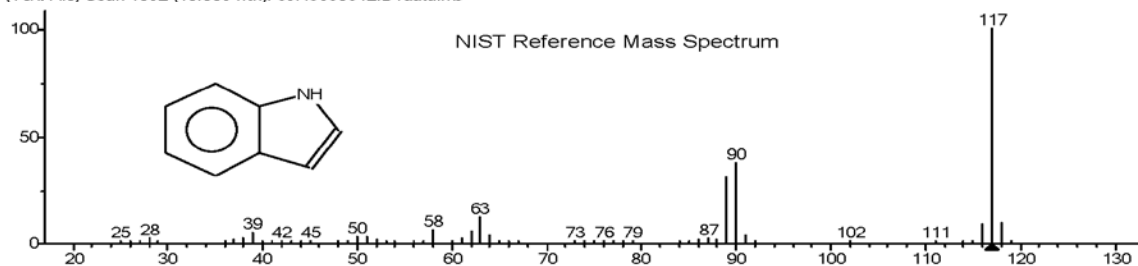
<sup>a</sup> Peaks comprising ≥ 0.5% of total area.

### GC/MS Instrument Parameters:

Instrument / Ionization	Gas Chromatograph with Mass Spectrometer / Electron Impact
Solvent	Ethanol (~ 1 mg/mL)
Column	J&W Scientific HP-5MS, 30 m x 0.25 mm ID, 0.25-μm film thickness
Carrier Gas	Helium at 1.0 mL/min
Oven Program	35°C, hold 2 min; ramp @ 10°C/min to 310°C, hold 7 min
Source Temperature	230°C
Auxiliary Temperature	250°C
Scan Range	25 – 500 amu
Injector Temperature	250°C
Injection Volume / Mode	1 μL / Split (100:1)
Data Analysis Software	MSD ChemStation, v D.03.00.SP1 and NIST Library v 2.0f, build 10/08/2008



(Text File) Scan 1892 (13.389 min): 09H0608012.D\data.ms



MW: 117 CAS# 120-72-9 (mainlib) Indole