

Chemical Information:

Name: N,N-Diethyl-m-toluamide (DEET)
CAS No.: 134-62-3 Supplier: Sigma-Aldrich
Tox21_ID No.: Tox21_201980 Lot No.: 06013HB
NTP_CID No.: 1006 MW: 191.27 g/mol

Date of Analysis: 02 October 2007

Purity and Identity Results:

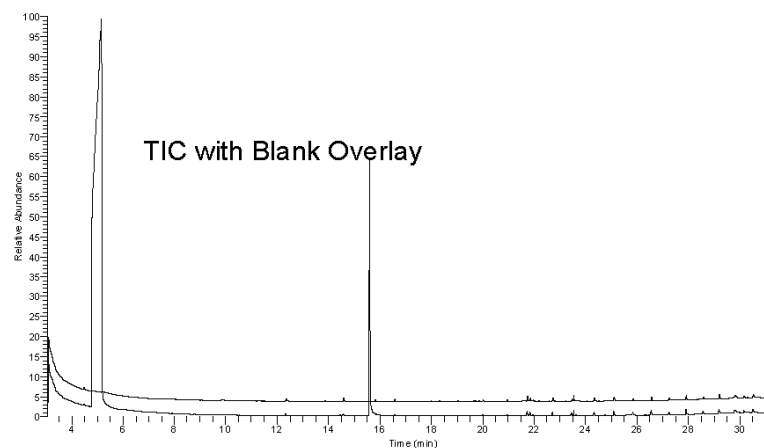
Peak Identity	Retention Time (min)	Purity (% Total Area) ^a
DMSO	5.16	Not applicable
N,N-Diethyl-m-toluamide (DEET)	15.59	99.33

^a Peaks comprising $\geq 0.5\%$ of total area.

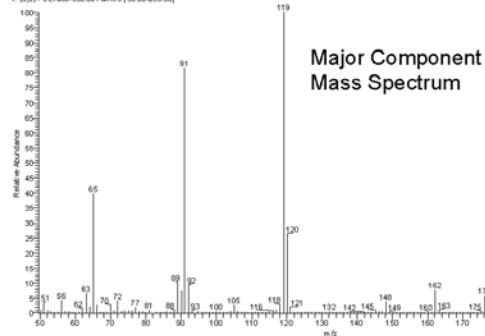
GC/MS Instrument Parameters:

Instrument / Ionization	Gas Chromatograph / Mass Spectrometer / Electron Impact
Solvent	Dichloromethane (100 mM in DMSO, diluted 1/1000 with dichloromethane)
Column	J&W Scientific HP-5MS, 30 m x 0.25 mm ID, 0.25- μ m film thickness
Carrier Gas	Helium at 1.0 mL/min
Oven Program	35°C, hold 2 min; ramp @ 10°C/min to 310°C, hold 2 min
Source Temperature	250°C
Auxiliary Temperature	250°C
Scan Range	50 – 250 amu
Injector Temperature	250°C
Injection Volume / Mode	2 μ L / Splitless
Run Time	31.5 minutes
Data Analysis Software	Xcalibur, v 1.2 and NIST Library v 1.7, build 11/5/1999

RT: 3.05 - 31.50 SM: 30



07/02/06 #1511 RT: 15.59 A/I: 1 NL: 3.40E6
T: (0.0) + c:\data\350.00 Full.ms [50.00-250.00]



NIST Reference Mass Spectrum

