

Chemical Information:

Name: Cyclohexene, 1-methyl-4-(1-methylethenyl)-
CAS No.: 138-86-3 Supplier: TCI America
Tox21_ID No.: Tox21_201818 Lot No.: DBZAE
NTP_CID No.: 3838 MW: 136.24 g/mol

Date of Analysis: 01 November 2016

Purity and Identity Results:

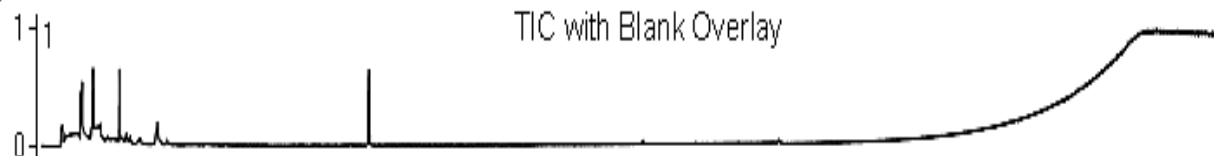
Peak Identity	Retention Time (min)	Purity (% Total Area) ^a
Cyclohexene, 1-methyl-4-(1-methylethenyl)-	14.60	99.25
Unknown	14.75	0.75

^a Peaks comprising $\geq 0.5\%$ of total area.

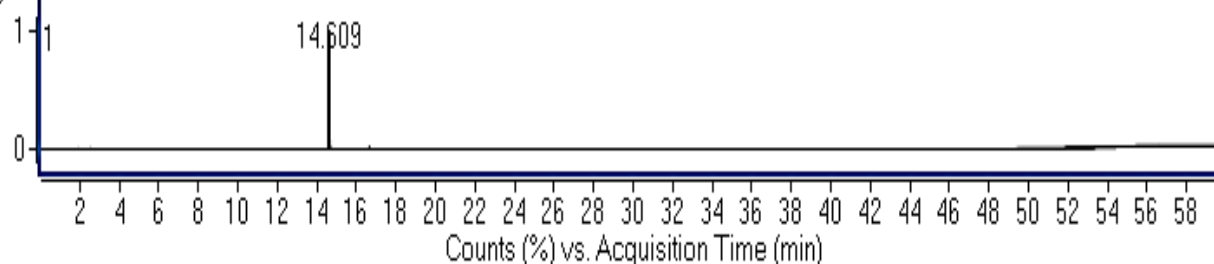
GC/MS Instrument Parameters:

Instrument / Ionization	Gas Chromatograph with Mass Spectrometer / Electron Impact
Solvent	Methanol
Column	Restek Rtx-5MS with Integra-Guard, 30 m x 0.25 mm ID, 1- μ m film thickness
Carrier Gas	Helium at 1.5 mL/min
Oven Program	50°C, hold 2 min; ramp @ 5°C/min to 315°C, hold 5 min
Source Temperature	230°C
Auxiliary Temperature	250°C
Scan Range	40 – 650 amu
Injector Temperature	250°C
Injection Volume / Mode	1 μ L / Splitless
Data Analysis Software	MassHunter GC/MS Acquisition B.07.02.1938 / MassHunter Qualitative Analysis B.07.00 Build 7.0.7024.0 / NIST Library Version 2.2 Build 2014

x10² + TIC Scan 20161101_MSD11_010.D



x10² + TIC Scan 20161101_MSD11_031.D



x10⁶ Limonene: + Scan (rt 14.554, 14.561, 14.568, 14.575 ... min, 16 scans) 20161101_MSD11_031.D

