

# Chemical Information:

Name: Hydroquinone dimethyl ether  
CAS No.: 150-78-7 Supplier: Sigma-Aldrich  
Tox21\_ID No.: Tox21\_201333 Lot No.: 04715LE  
NTP\_CID No.: 859 MW: 138.16 g/mol

Date of Analysis: 18 December 2008

## Purity and Identity Results:

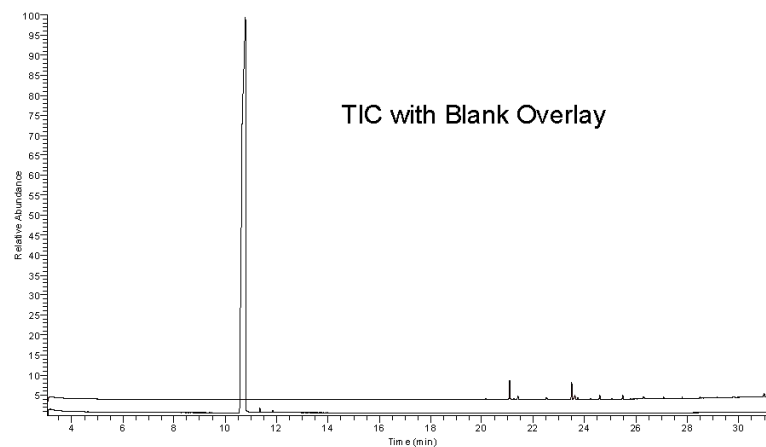
Peak Identity	Retention Time (min)	Purity (% Total Area) <sup>a</sup>
Hydroquinone dimethyl ether	10.79	99.75

<sup>a</sup> Peaks comprising  $\geq 0.5\%$  of total area.

## GC/MS Instrument Parameters:

Instrument / Ionization	Gas Chromatograph with Mass Spectrometer / Electron Impact
Solvent	Dichloromethane (~ 6 mg/mL)
Column	J&W Scientific HP-5MS, 30 m x 0.25 mm ID, 0.25- $\mu$ m film thickness
Carrier Gas	Helium at 1.0 mL/min
Oven Program	35°C, hold 2 min; ramp @ 10°C/min to 310°C, hold 2 min
Source Temperature	250°C
Auxiliary Temperature	250°C
Scan Range	25 – 350 amu
Injector Temperature	250°C
Injection Volume / Mode	2 $\mu$ L / Split (10:1)
Run Time	31.5 minutes
Data Analysis Software	Xcalibur, v 1.2 and NIST Library v 2.0, build 7/23/2008

RT: 3.05 - 31.50 SM: 3G



09110121 #000 RT: 10.00, 10.79, 11.00, 11.21, 11.41, 11.61, 11.81, 12.01, 12.21, 12.41, 12.61, 12.81, 13.01, 13.21, 13.41, 13.61, 13.81, 14.01, 14.21, 14.41, 14.61, 14.81, 15.01, 15.21, 15.41, 15.61, 15.81, 16.01, 16.21, 16.41, 16.61, 16.81, 17.01, 17.21, 17.41, 17.61, 17.81, 18.01, 18.21, 18.41, 18.61, 18.81, 19.01, 19.21, 19.41, 19.61, 19.81, 20.01, 20.21, 20.41, 20.61, 20.81, 21.01, 21.21, 21.41, 21.61, 21.81, 22.01, 22.21, 22.41, 22.61, 22.81, 23.01, 23.21, 23.41, 23.61, 23.81, 24.01, 24.21, 24.41, 24.61, 24.81, 25.01, 25.21, 25.41, 25.61, 25.81, 26.01, 26.21, 26.41, 26.61, 26.81, 27.01, 27.21, 27.41, 27.61, 27.81, 28.01, 28.21, 28.41, 28.61, 28.81, 29.01, 29.21, 29.41, 29.61, 29.81, 30.01, 30.21, 30.41, 30.61, 30.81, 31.01, 31.21, 31.41, 31.61, 31.81, 32.01, 32.21, 32.41, 32.61, 32.81, 33.01, 33.21, 33.41, 33.61, 33.81, 34.01, 34.21, 34.41, 34.61, 34.81, 35.01, 35.21, 35.41, 35.61, 35.81, 36.01, 36.21, 36.41, 36.61, 36.81, 37.01, 37.21, 37.41, 37.61, 37.81, 38.01, 38.21, 38.41, 38.61, 38.81, 39.01, 39.21, 39.41, 39.61, 39.81, 40.01, 40.21, 40.41, 40.61, 40.81, 41.01, 41.21, 41.41, 41.61, 41.81, 42.01, 42.21, 42.41, 42.61, 42.81, 43.01, 43.21, 43.41, 43.61, 43.81, 44.01, 44.21, 44.41, 44.61, 44.81, 45.01, 45.21, 45.41, 45.61, 45.81, 46.01, 46.21, 46.41, 46.61, 46.81, 47.01, 47.21, 47.41, 47.61, 47.81, 48.01, 48.21, 48.41, 48.61, 48.81, 49.01, 49.21, 49.41, 49.61, 49.81, 50.01, 50.21, 50.41, 50.61, 50.81, 51.01, 51.21, 51.41, 51.61, 51.81, 52.01, 52.21, 52.41, 52.61, 52.81, 53.01, 53.21, 53.41, 53.61, 53.81, 54.01, 54.21, 54.41, 54.61, 54.81, 55.01, 55.21, 55.41, 55.61, 55.81, 56.01, 56.21, 56.41, 56.61, 56.81, 57.01, 57.21, 57.41, 57.61, 57.81, 58.01, 58.21, 58.41, 58.61, 58.81, 59.01, 59.21, 59.41, 59.61, 59.81, 60.01, 60.21, 60.41, 60.61, 60.81, 61.01, 61.21, 61.41, 61.61, 61.81, 62.01, 62.21, 62.41, 62.61, 62.81, 63.01, 63.21, 63.41, 63.61, 63.81, 64.01, 64.21, 64.41, 64.61, 64.81, 65.01, 65.21, 65.41, 65.61, 65.81, 66.01, 66.21, 66.41, 66.61, 66.81, 67.01, 67.21, 67.41, 67.61, 67.81, 68.01, 68.21, 68.41, 68.61, 68.81, 69.01, 69.21, 69.41, 69.61, 69.81, 70.01, 70.21, 70.41, 70.61, 70.81, 71.01, 71.21, 71.41, 71.61, 71.81, 72.01, 72.21, 72.41, 72.61, 72.81, 73.01, 73.21, 73.41, 73.61, 73.81, 74.01, 74.21, 74.41, 74.61, 74.81, 75.01, 75.21, 75.41, 75.61, 75.81, 76.01, 76.21, 76.41, 76.61, 76.81, 77.01, 77.21, 77.41, 77.61, 77.81, 78.01, 78.21, 78.41, 78.61, 78.81, 79.01, 79.21, 79.41, 79.61, 79.81, 80.01, 80.21, 80.41, 80.61, 80.81, 81.01, 81.21, 81.41, 81.61, 81.81, 82.01, 82.21, 82.41, 82.61, 82.81, 83.01, 83.21, 83.41, 83.61, 83.81, 84.01, 84.21, 84.41, 84.61, 84.81, 85.01, 85.21, 85.41, 85.61, 85.81, 86.01, 86.21, 86.41, 86.61, 86.81, 87.01, 87.21, 87.41, 87.61, 87.81, 88.01, 88.21, 88.41, 88.61, 88.81, 89.01, 89.21, 89.41, 89.61, 89.81, 90.01, 90.21, 90.41, 90.61, 90.81, 91.01, 91.21, 91.41, 91.61, 91.81, 92.01, 92.21, 92.41, 92.61, 92.81, 93.01, 93.21, 93.41, 93.61, 93.81, 94.01, 94.21, 94.41, 94.61, 94.81, 95.01, 95.21, 95.41, 95.61, 95.81, 96.01, 96.21, 96.41, 96.61, 96.81, 97.01, 97.21, 97.41, 97.61, 97.81, 98.01, 98.21, 98.41, 98.61, 98.81, 99.01, 99.21, 99.41, 99.61, 99.81, 100.01, 100.21, 100.41, 100.61, 100.81, 101.01, 101.21, 101.41, 101.61, 101.81, 102.01, 102.21, 102.41, 102.61, 102.81, 103.01, 103.21, 103.41, 103.61, 103.81, 104.01, 104.21, 104.41, 104.61, 104.81, 105.01, 105.21, 105.41, 105.61, 105.81, 106.01, 106.21, 106.41, 106.61, 106.81, 107.01, 107.21, 107.41, 107.61, 107.81, 108.01, 108.21, 108.41, 108.61, 108.81, 109.01, 109.21, 109.41, 109.61, 109.81, 110.01, 110.21, 110.41, 110.61, 110.81, 111.01, 111.21, 111.41, 111.61, 111.81, 112.01, 112.21, 112.41, 112.61, 112.81, 113.01, 113.21, 113.41, 113.61, 113.81, 114.01, 114.21, 114.41, 114.61, 114.81, 115.01, 115.21, 115.41, 115.61, 115.81, 116.01, 116.21, 116.41, 116.61, 116.81, 117.01, 117.21, 117.41, 117.61, 117.81, 118.01, 118.21, 118.41, 118.61, 118.81, 119.01, 119.21, 119.41, 119.61, 119.81, 120.01, 120.21, 120.41, 120.61, 120.81, 121.01, 121.21, 121.41, 121.61, 121.81, 122.01, 122.21, 122.41, 122.61, 122.81, 123.01, 123.21, 123.41, 123.61, 123.81, 124.01, 124.21, 124.41, 124.61, 124.81, 125.01, 125.21, 125.41, 125.61, 125.81, 126.01, 126.21, 126.41, 126.61, 126.81, 127.01, 127.21, 127.41, 127.61, 127.81, 128.01, 128.21, 128.41, 128.61, 128.81, 129.01, 129.21, 129.41, 129.61, 129.81, 130.01, 130.21, 130.41, 130.61, 130.81, 131.01, 131.21, 131.41, 131.61, 131.81, 132.01, 132.21, 132.41, 132.61, 132.81, 133.01, 133.21, 133.41, 133.61, 133.81, 134.01, 134.21, 134.41, 134.61, 134.81, 135.01, 135.21, 135.41, 135.61, 135.81, 136.01, 136.21, 136.41, 136.61, 136.81, 137.01, 137.21, 137.41, 137.61, 137.81, 138.01, 138.21, 138.41, 138.61, 138.81, 139.01, 139.21, 139.41, 139.61, 139.81, 140.01, 140.21, 140.41, 140.61, 140.81, 141.01, 141.21, 141.41, 141.61, 141.81, 142.01, 142.21, 142.41, 142.61, 142.81, 143.01, 143.21, 143.41, 143.61, 143.81, 144.01, 144.21, 144.41, 144.61, 144.81, 145.01, 145.21, 145.41, 145.61, 145.81, 146.01, 146.21, 146.41, 146.61, 146.81, 147.01, 147.21, 147.41, 147.61, 147.81, 148.01, 148.21, 148.41, 148.61, 148.81, 149.01, 149.21, 149.41, 149.61, 149.81, 150.01, 150.21, 150.41, 150.61, 150.81, 151.01, 151.21, 151.41, 151.61, 151.81, 152.01, 152.21, 152.41, 152.61, 152.81, 153.01, 153.21, 153.41, 153.61, 153.81, 154.01, 154.21, 154.41, 154.61, 154.81, 155.01, 155.21, 155.41, 155.61, 155.81, 156.01, 156.21, 156.41, 156.61, 156.81, 157.01, 157.21, 157.41, 157.61, 157.81, 158.01, 158.21, 158.41, 158.61, 158.81, 159.01, 159.21, 159.41, 159.61, 159.81, 160.01, 160.21, 160.41, 160.61, 160.81, 161.01, 161.21, 161.41, 161.61, 161.81, 162.01, 162.21, 162.41, 162.61, 162.81, 163.01, 163.21, 163.41, 163.61, 163.81, 164.01, 164.21, 164.41, 164.61, 164.81, 165.01, 165.21, 165.41, 165.61, 165.81, 166.01, 166.21, 166.41, 166.61, 166.81, 167.01, 167.21, 167.41, 167.61, 167.81, 168.01, 168.21, 168.41, 168.61, 168.81, 169.01, 169.21, 169.41, 169.61, 169.81, 170.01, 170.21, 170.41, 170.61, 170.81, 171.01, 171.21, 171.41, 171.61, 171.81, 172.01, 172.21, 172.41, 172.61, 172.81, 173.01, 173.21, 173.41, 173.61, 173.81, 174.01, 174.21, 174.41, 174.61, 174.81, 175.01, 175.21, 175.41, 175.61, 175.81, 176.01, 176.21, 176.41, 176.61, 176.81, 177.01, 177.21, 177.41, 177.61, 177.81, 178.01, 178.21, 178.41, 178.61, 178.81, 179.01, 179.21, 179.41, 179.61, 179.81, 180.01, 180.21, 180.41, 180.61, 180.81, 181.01, 181.21, 181.41, 181.61, 181.81, 182.01, 182.21, 182.41, 182.61, 182.81, 183.01, 183.21, 183.41, 183.61, 183.81, 184.01, 184.21, 184.41, 184.61, 184.81, 185.01, 185.21, 185.41, 185.61, 185.81, 186.01, 186.21, 186.41, 186.61, 186.81, 187.01, 187.21, 187.41, 187.61, 187.81, 188.01, 188.21, 188.41, 188.61, 188.81, 189.01, 189.21, 189.41, 189.61, 189.81, 190.01, 190.21, 190.41, 190.61, 190.81, 191.01, 191.21, 191.41, 191.61, 191.81, 192.01, 192.21, 192.41, 192.61, 192.81, 193.01, 193.21, 193.41, 193.61, 193.81, 194.01, 194.21, 194.41, 194.61, 194.81, 195.01, 195.21, 195.41, 195.61, 195.81, 196.01, 196.21, 196.41, 196.61, 196.81, 197.01, 197.21, 197.41, 197.61, 197.81, 198.01, 198.21, 198.41, 198.61, 198.81, 199.01, 199.21, 199.41, 199.61, 199.81, 200.01, 200.21, 200.41, 200.61, 200.81, 201.01, 201.21, 201.41, 201.61, 201.81, 202.01, 202.21, 202.41, 202.61, 202.81, 203.01, 203.21, 203.41, 203.61, 203.81, 204.01, 204.21, 204.41, 204.61, 204.81, 205.01, 205.21, 205.41, 205.61, 205.81, 206.01, 206.21, 206.41, 206.61, 206.81, 207.01, 207.21, 207.41, 207.61, 207.81, 208.01, 208.21, 208.41, 208.61, 208.81, 209.01, 209.21, 209.41, 209.61, 209.81, 210.01, 210.21, 210.41, 210.61, 210.81, 211.01, 211.21, 211.41, 211.61, 211.81, 212.01, 212.21, 212.41, 212.61, 212.81, 213.01, 213.21, 213.41, 213.61, 213.81, 214.01, 214.21, 214.41, 214.61, 214.81, 215.01, 215.21, 215.41, 215.61, 215.81, 216.01, 216.21, 216.41, 216.61, 216.81, 217.01, 217.21, 217.41, 217.61, 217.81, 218.01, 218.21, 218.41, 218.61, 218.81, 219.01, 219.21, 219.41, 219.61, 219.81, 220.01, 220.21, 220.41, 220.61, 220.81, 221.01, 221.21, 221.41, 221.61, 221.81, 222.01, 222.21, 222.41, 222.61, 222.81, 223.01, 223.21, 223.41, 223.61, 223.81, 224.01, 224.21, 224.41, 224.61, 224.81, 225.01, 225.21, 225.41, 225.61, 225.81, 226.01, 226.21, 226.41, 226.61, 226.81, 227.01, 227.21, 227.41, 227.61, 227.81, 228.01, 228.21, 228.41, 228.61, 228.81, 229.01, 229.21, 229.41, 229.61, 229.81, 230.01, 230.21, 230.41, 230.61, 230.81, 231.01, 231.21, 231.41, 231.61, 231.81, 232.01, 232.21, 232.41, 232.61, 232.81, 233.01, 233.21, 233.41, 233.61, 233.81, 234.01, 234.21, 234.41, 234.61, 234.81, 235.01, 235.21, 235.41, 235.61, 235.81, 236.01, 236.21, 236.41, 236.61, 236.81, 237.01, 237.21, 237.41, 237.61, 237.81, 238.01, 238.21, 238.41, 238.61, 238.81, 239.01, 239.21, 239.41, 239.61, 239.81, 240.01, 240.21, 240.41, 240.61, 240.81, 241.01, 241.21, 241.41, 241.61, 241.81, 242.01, 242.21, 242.41, 242.61, 242.81, 243.01, 243.21, 243.41, 243.61, 243.81, 244.01, 244.21, 244.41, 244.61, 244.81, 245.01, 245.21, 245.41, 245.61, 245.81, 246.01, 246.21, 246.41, 246.61, 246.81, 247.01, 247.21, 247.41, 247.61, 247.81, 248.01, 248.21, 248.41, 248.61, 248.81, 249.01, 249.21, 249.41, 249.61, 249.81, 250.01, 250.21, 250.41, 250.61, 250.81, 251.01, 251.21, 251.41, 251.61, 251.81, 252.01, 252.21, 252.41, 252.61, 252.81, 253.01, 253.21, 253.41, 253.61, 253.81, 254.01, 254.21, 254.41, 254.61, 254.81, 255.01, 255.21, 255.41, 255.61, 255.81, 256.01, 256.21, 256.41, 256.61, 256.81, 257.01, 257.21, 257.41, 257.61, 257.81, 258.01, 258.21, 258.41, 258.61, 258.81, 259.01, 259.21, 259.41, 259.61, 259.81, 260.01, 260.21, 260.41, 260.61, 260.81, 261.01, 261.21, 261.41, 261.61, 261.81, 262.01, 262.21, 262.41, 262.61, 262.81, 263.01, 263.21, 263.41, 263.61, 263.81, 264.01, 264.21, 264.41, 264.61, 264.81, 265.01, 265.21, 265.41, 265.61, 265.81, 266.01, 266.21, 266.41, 266.61, 266.81, 267.01, 267.21, 267.41, 267.61, 267.81, 268.01, 268.21, 268.41, 268.61, 268.81, 269.01, 269.21, 269.41, 269.61, 269.81, 270.01, 270.21, 270.41, 270.61, 270.81, 271.01, 271.21, 271.41, 271.61, 271.81, 272.01, 272.21, 272.41, 272.61, 272.81, 273.01, 273.21, 273.41, 273.61, 273.81, 274.01, 274.21, 274.41, 274.61, 274.81, 275.01, 275.21, 275.41, 275.61, 275.81, 276.01, 276.21, 276.41, 276.61, 276.81, 277.01, 277.21, 277.41, 277.61, 277.81, 278.01, 278.21, 278.41, 278.61, 278.81, 279.01, 279.21, 279.41, 279.61, 279.81, 280.01, 280.21, 280.41, 280.61, 280.81, 281.01, 281.21, 281.41, 281.61, 281.81, 282.01, 282.21, 282.41, 282.61, 282.81, 283.01, 283.21, 283.41, 283.61, 283.81, 284.01, 284.21, 284.41, 284.61, 284.81, 285.01, 285.21, 285.41, 285.61, 285.81, 286.01, 286.21, 286.41, 286.61, 286.81, 287.01, 287.21, 287.41, 287.61, 287.81, 288.01, 288.21, 288.41, 288.61, 288.81, 289.01, 289.21, 289.41, 289.61, 289.81, 290.01, 290.21, 290.41, 290.61, 290.81, 291.01, 291.21, 291.41, 291.61, 291.81, 292.01, 292.21, 292.41, 292.61, 292.81, 293.01, 293.21, 293.41, 293.61, 293.81, 294.01, 294.21, 294.41, 294.61, 294.81, 295.01, 295.21, 295.41, 295.61, 295.81, 296.01, 296.21, 296.41, 296.61, 296.81, 297.01, 297.21, 297.41, 297.61, 297.81, 298.01, 298.21, 298.41, 298.61, 298.81, 299.01, 299.21, 299.41, 299.61, 299.81, 300.01, 300.21, 300.41, 300.61, 300.81, 301.01, 301.21, 301.41, 301.