

Chemical Information:

Name: 2-Ethylhexyl glycidyl ether
CAS No.: 2461-15-6 Supplier: Sigma-Aldrich
Tox21_ID No.: Tox21_201983 Lot No.: 12415TD
NTP_CID No.: 246 MW: 186.29 g/mol

Date of Analysis: 24 February 2009

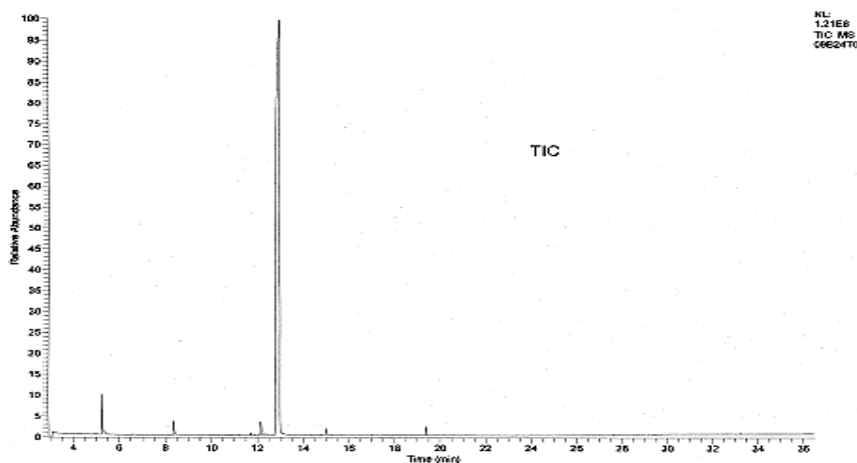
Purity and Identity Results:

Peak Identity	Retention Time (min)	Purity (% Total Area) ^a
Acetone	5.24	Not applicable
unknown	8.38	0.70
unknown	12.16	0.71
2-Ethylhexyl glycidyl ether	12.98	97.63

^a Peaks comprising $\geq 0.5\%$ of total area.

GC/MS Instrument Parameters:

Instrument / Ionization	Gas Chromatograph with Mass Spectrometer / Electron Impact
Solvent	Acetone (~ 1 mg/mL)
Column	J&W Scientific HP-5MS, 30 m x 0.25 mm ID, 0.25- μ m film thickness
Carrier Gas	Helium at 1.0 mL/min
Oven Program	35°C, hold 2 min; ramp @ 10°C/min to 310°C, hold 7 min
Source Temperature	250°C
Auxiliary Temperature	250°C
Scan Range	25 – 350 amu
Injector Temperature	250°C
Injection Volume / Mode	1 μ L / Split (10:1)
Run Time	36.5 minutes
Data Analysis Software	Xcalibur, v 1.2 and NIST Library v 2.0, build 7/23/2008



0962409 #1172 RT: 12.77 AV: 1 SB: 2 12.74, 13.03 NL: 2.48E5
T: (0.0) * c EI det=350.00 Full ms [25.00-350.00]

