

Chemical Information:

Name: Tripropylene glycol, monomethyl ether
 CAS No.: 25498-49-1 Supplier: Sigma-Aldrich
 Tox21_ID No.: Tox21_201437 Lot No.: 41098LJ
 NTP_CID No.: 3729 MW: 206.28 g/mol

Date of Analysis: 29 June 2016

Purity and Identity Results:

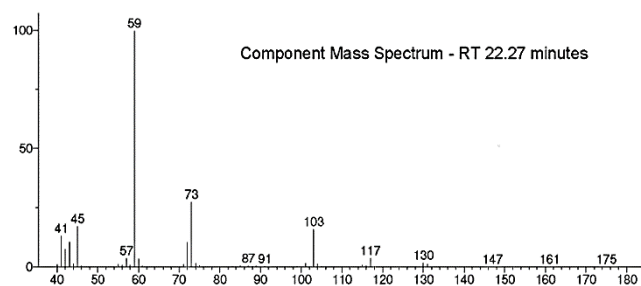
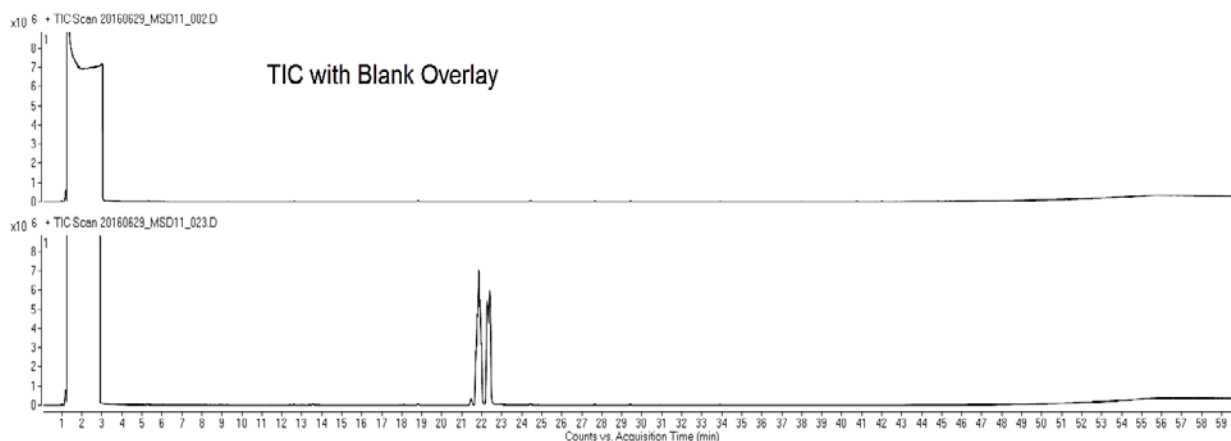
Peak Identity	Retention Time (min)	Purity (% Total Area) ^a
unknown	21.46	1.33
2-Propanol, 1-[2-(2-methoxy-1-methylethoxy)-1-methylethoxy]-	21.77	14.77
2-Propanol, 1-[2-(2-methoxy-1-methylethoxy)-1-methylethoxy]-	21.84	21.12
2-Propanol, 1-[2-(2-methoxy-1-methylethoxy)-1-methylethoxy]-	21.90	17.91
Tri(1,2-propylene glycol), monomethyl ether	22.27	22.88
2-Propanol, 1-[2-(2-methoxy-1-methylethoxy)-1-methylethoxy]-	22.39	21.48

^a Peaks comprising $\geq 0.5\%$ of total area.

Note: Mixture of isomers per CoA; reported purity = 98.16%.

GC/MS Instrument Parameters:

Instrument / Ionization	Gas Chromatograph with Mass Spectrometer / Electron Impact
Solvent	Ethanol
Column	Rtx-5 MS, 30 m x 0.25 mm ID, 1- μ m film thickness
Carrier Gas	Helium at 2.0 mL/min
Oven Program	50°C, hold 2 min; ramp @ 5°C/min to 315°C, hold 5 min
Source Temperature	230°C
Auxiliary Temperature	250°C
Scan Range	40 – 800 amu
Injector Temperature	250°C
Injection Volume / Mode	1 μ L / Splitless
Data Analysis Software	MassHunter GC/MS Acquisition B.07.02.1938 / MassHunter Qualitative Analysis B.07.00 Build 7.0.7024.0 / NIST Library Version 2.2 Build 2014



Name: Tri(1,2-propylene glycol), monomethyl ether; + Scan (rt: 22.192, 22.201, 22.209, 22.218 ... min, 19 scans)
20160629_MSD11_023.D Subtract

