

Chemical Information:

Name: Diisodecyl phthalate
 CAS No.: 26761-40-0
 Tox21_ID No.: Tox21_201431
 NTP_CID No.: 2449

Date of Analysis: 15 April 2010

Supplier: Sigma-Aldrich
 Lot No.: 1379769
 MW: 446.66 g/mol

Purity and Identity Results:

Peak Identity ^a	Retention Time (min)	Purity (% Total Area) ^b	Peak Identity ^a	Retention Time (min)	Purity (% Total Area) ^b
Diisodecyl phthalate	28.30	9.96	Diisodecyl phthalate	28.70	27.21
Diisodecyl phthalate	28.40	15.90	Diisodecyl phthalate	28.89	14.27
Diisodecyl phthalate	28.50	30.59	Diisodecyl phthalate	29.08	2.06

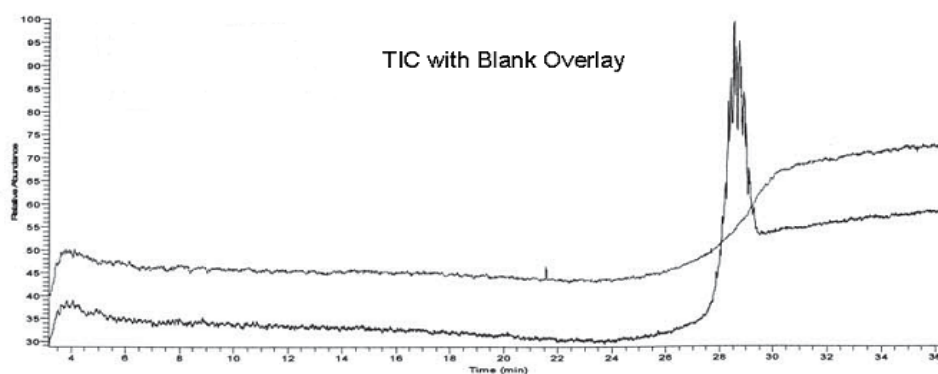
^a Per CoA, mixture of esters of isomeric C10-branched alkyls. Analysis yielded a number of unresolved components between 27.5 and 29.5 minutes. Comparison of mass spectra to NIST Library identified all components as CAS # 26761-40-0, indicating components are isomers of diisodecyl phthalate. Total = 99.99% purity.

^b Peaks comprising $\geq 0.5\%$ of total area.

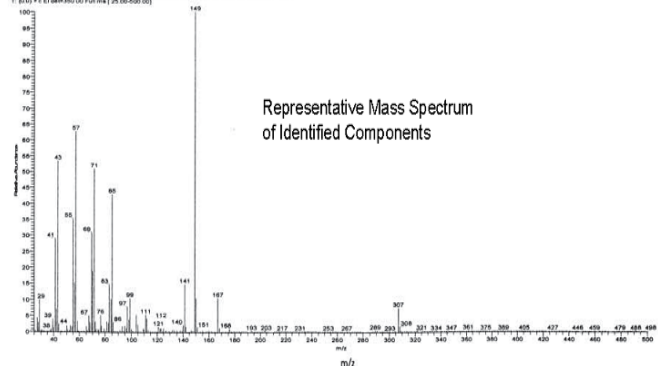
GC/MS Instrument Parameters:

Instrument / Ionization	Gas Chromatograph with Mass Spectrometer / Electron Impact
Solvent	Dichloromethane (~ 1 mg/mL)
Column	J&W Scientific HP-5MS, 30 m x 0.25 mm ID, 0.25- μ m film thickness
Carrier Gas	Helium at 1.0 mL/min
Oven Program	35°C, hold 2 min; ramp @ 10°C/min to 310°C, hold 7 min
Source Temperature	250°C
Auxiliary Temperature	250°C
Scan Range	25 – 500 amu
Injector Temperature	250°C
Injection Volume / Mode	1 μ L / Split (100:1)
Data Analysis Software	Xcalibur ver 1.2, and NIST Library ver 2.0f, build 10/08/2008

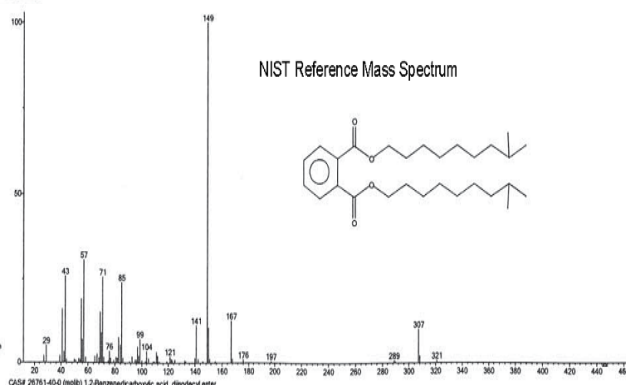
RT: 3.15 - 38.46 SM 3G



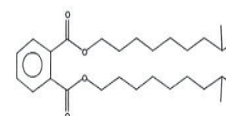
10018710 #3000-3066 RT: 28.31-28.82 AU: 82 BB: 121 30.80-31.45 25.36-25.88 HL: 3.11E5
T: 8.0E3 - 4.0E4 scan 350.00 Full Scan [25.00-30.00]



Representative Mass Spectrum
of Identified Components



NIST Reference Mass Spectrum



CAS# 26761-40-0 (npl): 1,2-Benzenedicarboxylic acid, diisodecyl ester