

Chemical Information:

Name: Propanol, 1(or 2)-(2-methoxymethylethoxy)- Date of Analysis: 03 November 2016
CAS No.: 34590-94-8 Supplier: Sigma Aldrich
Tox21_ID No.: Tox21_201653 Lot No.: MKAA0038
NTP_CID No.: 3354 MW: 148.20 g/mol

Purity and Identity Results:

| Peak Identity ^a | Retention Time (min) | Purity (% Total Area) ^b | Peak Identity ^a | Retention Time (min) | Purity (% Total Area) ^b |
|----------------------------|----------------------|------------------------------------|----------------------------|----------------------|------------------------------------|
| 34590-94-8 | 13.25 | 2.58 | 34590-94-8 | 13.58 | 24.71 |
| 34590-94-8 | 13.38 | 4.33 | 34590-94-8 | 13.71 | 8.45 |
| 34590-94-8 | 13.46 | 23.98 | 34590-94-8 | 13.92 | 35.31 |

^a Multiple components, identified as isomers of propanol, 1(or 2)-(2-methoxymethylethoxy)-; total = 99.36%.

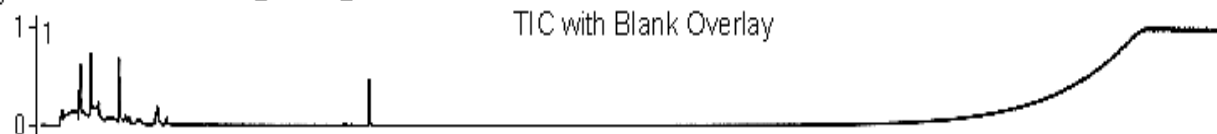
^b Peaks comprising $\geq 0.5\%$ of total area.

Note: Per CoA, mixture of isomers.

GC/MS Instrument Parameters:

| | |
|-------------------------|--|
| Instrument / Ionization | Gas Chromatograph with Mass Spectrometer / Electron Impact |
| Solvent | Methanol |
| Column | Restek Rtx-5MS with Integra-Guard, 30 m x 0.25 mm ID, 1- μ m film thickness |
| Carrier Gas | Helium at 1.5 mL/min |
| Oven Program | 50°C, hold 2 min; ramp @ 5°C/min to 315°C, hold 5 min |
| Source Temperature | 230°C |
| Auxiliary Temperature | 250°C |
| Scan Range | 40 – 470 amu |
| Injector Temperature | 250°C |
| Injection Volume / Mode | 1 μ L / Splitless |
| Data Analysis Software | MassHunter GC/MS Acquisition B.07.02.1938 / MassHunter Qualitative Analysis B.07.00 Build 7.0.7024.0 / NIST Library Version 2.2 Build 2014 |

x10² + TIC Scan 20161103_MSD11_003.D



x10² + TIC Scan 20161103_MSD11_011.D

