

Chemical Information:

Name: 2-Chloroacetophenone
CAS No.: 532-27-4
Tox21_ID No.: Tox21_202075
NTP_CID No.: 615
Supplier: Sigma-Aldrich
Lot No.: 02616HD
MW: 154.59 g/mol

Date of Analysis: 10 February 2009

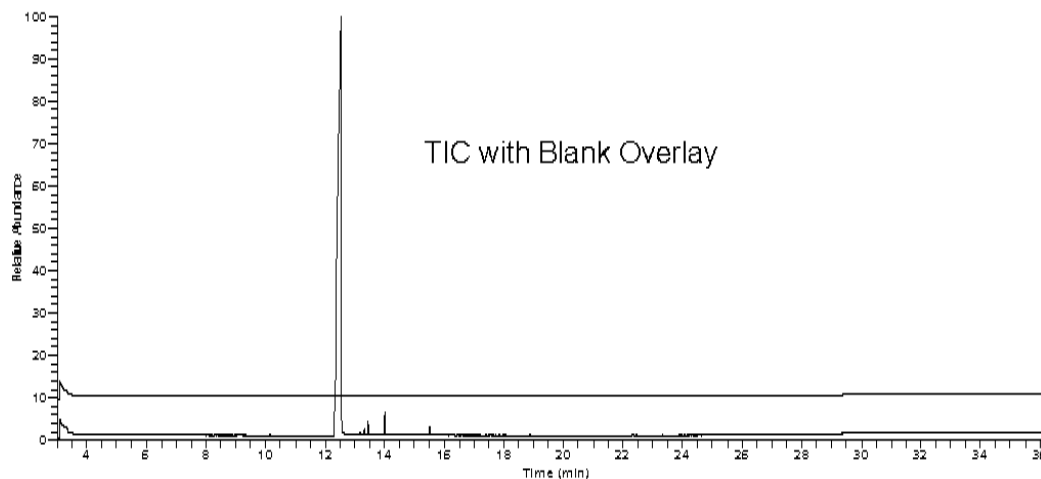
Purity and Identity Results:

Peak Identity	Retention Time (min)	Purity (% Total Area) ^a
2-Chloroacetophenone	12.54	97.75
unknown	13.44	0.55
unknown	14.01	0.94

^a Peaks comprising ≥ 0.5% of total area.

GC/MS Instrument Parameters:

Instrument / Ionization	Gas Chromatograph with Mass Spectrometer / Electron Impact
Solvent	Dichloromethane
Column	J&W Scientific HP-5MS, 30 m x 0.25 mm ID, 0.25-μm film thickness
Carrier Gas	Helium at 1.0 mL/min
Oven Program	35°C, hold 2 min; ramp @ 10°C/min to 310°C, hold 7 min
Source Temperature	250°C
Auxiliary Temperature	250°C
Scan Range	25 – 350 amu
Injector Temperature	250°C
Injection Volume / Mode	1 μL / Split (10:1)
Run Time	36.5 minutes
Data Analysis Software	Xcalibur, v 1.2 and NIST Library v 2.0, build 7/23/2008



0061004#1120 RT: 12.54 AU: 1 SR: 2 12 30, 15 50 NL: 3 2468
T: (0.0) = e RI data350.00 Full.ms [25.00-350.00]

