

Chemical Information:

Name: tris(2-Ethylhexyl)phosphate
 CAS No.: 78-42-2 Supplier: Sigma-Aldrich
 Tox21_ID No.: Tox21_201369 Lot No.: 08914MU
 NTP_CID No.: 1383 MW: 434.63 g/mol

Date of Analysis: 01 November 2007

Purity and Identity Results:

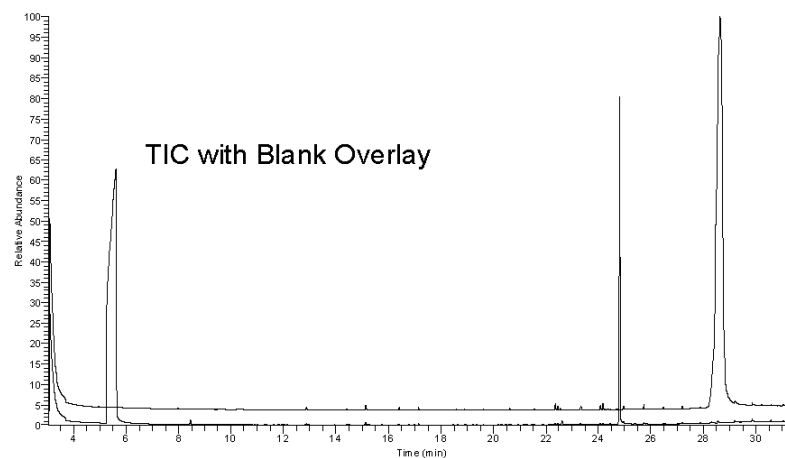
Peak Identity	Retention Time (min)	Purity (% Total Area) ^a
DMSO	5.63	Not applicable
unknown	8.46	1.04
unknown	22.61	0.92
tris(2-Ethylhexyl)phosphate	24.81	97.02
unknown	28.31	0.54

^a Peaks comprising $\geq 0.5\%$ of total area.

GC/MS Instrument Parameters:

Instrument / Ionization	Gas Chromatograph / Mass Spectrometer / Electron Impact
Solvent	Dichloromethane (100 mM in DMSO, diluted 1/1000 with dichloromethane)
Column	J&W Scientific HP-5MS, 30 m x 0.25 mm ID, 0.25- μ m film thickness
Carrier Gas	Helium at 1.0 mL/min
Oven Program	35°C, hold 2 min; ramp @ 10°C/min to 310°C, hold 2 min
Source Temperature	250°C
Auxiliary Temperature	250°C
Scan Range	50 – 450 amu
Injector Temperature	250°C
Injection Volume / Mode	2 μ L / Splitless
Run Time	31.5 minutes
Data Analysis Software	Xcalibur, v 1.2 and NIST Library v 1.7, build 11/5/1999

RT: 3.05 - 31.49 SM: 30



0760168#2013 RT: 24.76 AU: 1 SB: 2 24.74, 24.87 NL: 2.9966
 T: 0.011 eV (see 305.00 Full.ms) [50.004.00.00]

