

**Chemical Information:**

Name: Linalool  
CAS No.: 78-70-6  
Tox21\_ID No.: Tox21\_201658  
NTP\_CID No.: 907

Date of Analysis: 12 July 2007

Supplier: Sigma-Aldrich  
Lot No.: 02014DD  
MW: 154.25 g/mol

**Purity and Identity Results:**

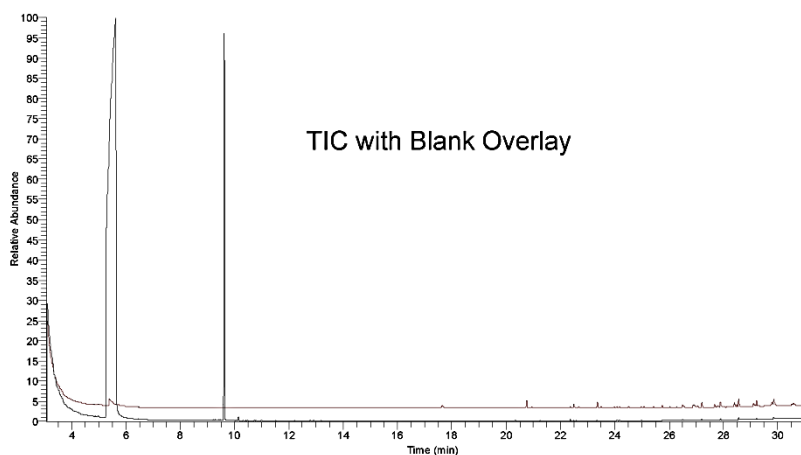
Peak Identity	Retention Time (min)	Purity (% Total Area) <sup>a</sup>
DMSO	5.63	Not applicable
Linalool	9.62	98.27
Unknown	10.14	0.91

<sup>a</sup> Peaks comprising  $\geq 0.5\%$  of total area.

**GC/MS Instrument Parameters:**

Instrument / Ionization	ThermoFinnigan TraceGC with ThermoFinnigan TraceMS / Electron Impact
Solvent	Dichloromethane (100 mM in DMSO, diluted 1/1000 with dichloromethane)
Column	J&W Scientific HP-5MS, 30 m x 0.25 mm ID, 0.25- $\mu$ m film thickness
Carrier Gas	Helium at 1.0 mL/min
Oven Program	35°C, hold 2 min; ramp @ 10°C/min to 310°C, hold 2 min
Source Temperature	250°C
Auxiliary Temperature	250°C
Scan Range	35 – 250 amu
Injector Temperature	250°C
Injection Volume / Mode	2 $\mu$ L / Splitless
Run Time	31.5 minutes
Data Analysis Software	Xcalibur, v 1.2 and NIST Library v 1.7, build 11/5/1999

RT: 3.05 - 31.50 SM 3G



07g1268 #1728 RT: 9.61 AU: 1 NL: 3.45E6  
T: (0.0) + c EI det=350.00 Full ms [35.00-250.00]

