

Chemical Information:

Name: 3-Chloro-1,2-propanediol
 CAS No.: 96-24-2 Supplier: Sigma-Aldrich
 Tox21_ID No.: Tox21_202262 Lot No.: 11025AJ
 NTP_CID No.: 4342 MW: 110.54 g/mol

Date of Analysis: 06 August 2009

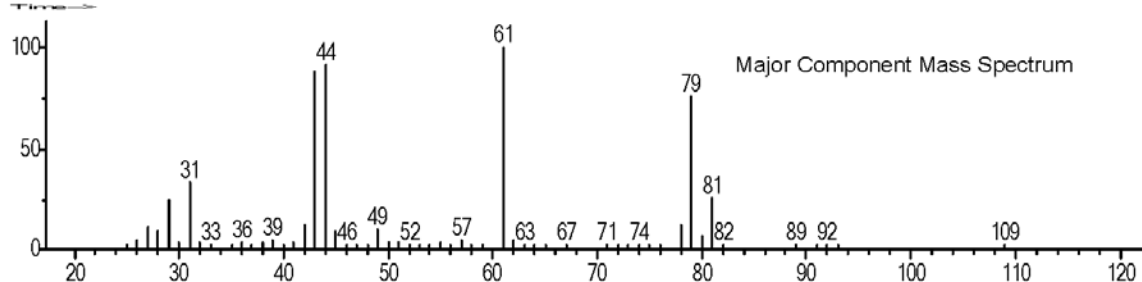
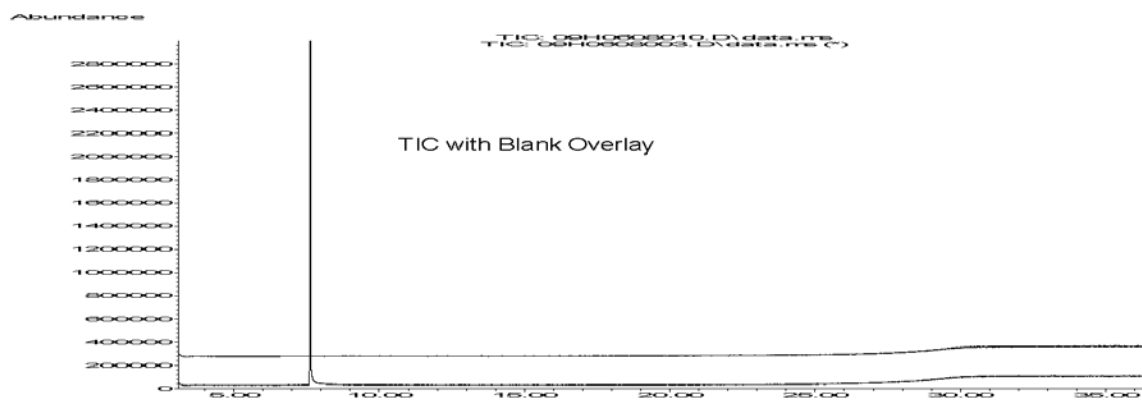
Purity and Identity Results:

Peak Identity	Retention Time (min)	Purity (% Total Area) ^a
3-Chloro-1,2-propanediol	7.63	100.00

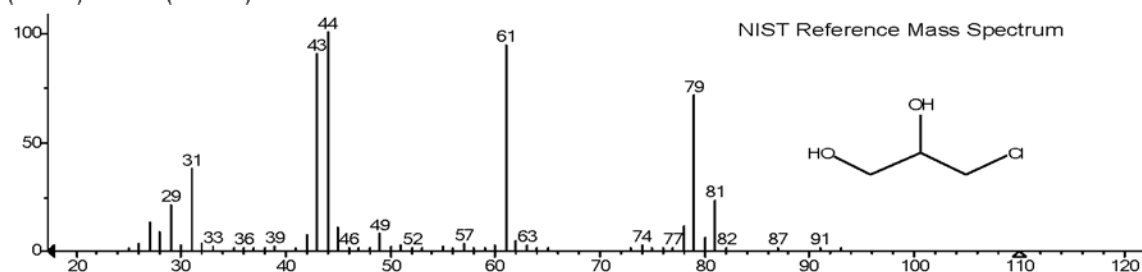
^a Peaks comprising $\geq 0.5\%$ of total area.

GC/MS Instrument Parameters:

Instrument / Ionization	Gas Chromatograph with Mass Spectrometer / Electron Impact
Solvent	Ethanol (~ 1 mg/mL)
Column	J&W Scientific HP-5MS, 30 m x 0.25 mm ID, 0.25- μ m film thickness
Carrier Gas	Helium at 1.0 mL/min
Oven Program	35°C, hold 2 min; ramp @ 10°C/min to 310°C, hold 7 min
Source Temperature	230°C
Auxiliary Temperature	250°C
Scan Range	25 – 500 amu
Injector Temperature	250°C
Injection Volume / Mode	1 μ L / Split (100:1)
Data Analysis Software	MSD ChemStation, v D.03.00.SP1 and NIST Library v 2.0f, build 10/08/2008



(Text File) Scan 835 (7.630 min): 09H0608010.D\data.ms



MW: 110 CAS# 96-24-2 (replib) 1,2-Propanediol, 3-chloro-