

Chemical Information:

Name: Ethylene thiourea
CAS No.: 96-45-7
Tox21_ID No.: Tox21_201294
NTP_CID No.: 800

Supplier: Sigma-Aldrich
Lot No.: 03903KC
MW: 102.16 g/mol

Date of Analysis: 25 October 2007

Purity and Identity Results:

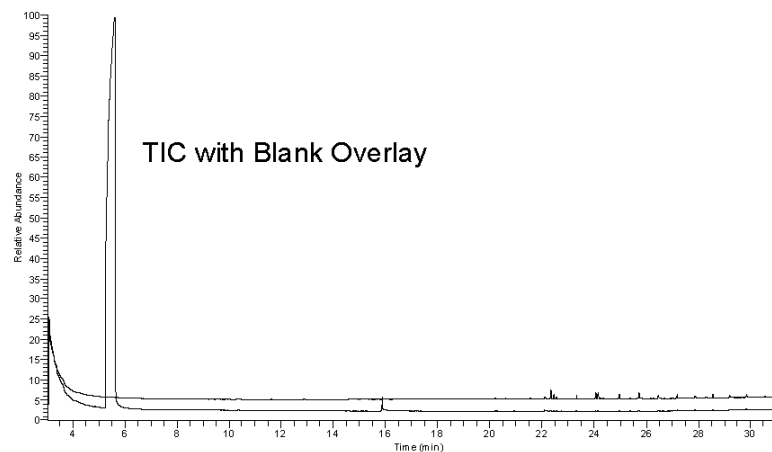
Peak Identity	Retention Time (min)	Purity (% Total Area) ^a
DMSO	5.62	Not applicable
Ethylene thiourea	15.88	100.00

^a Peaks comprising $\geq 0.5\%$ of total area.

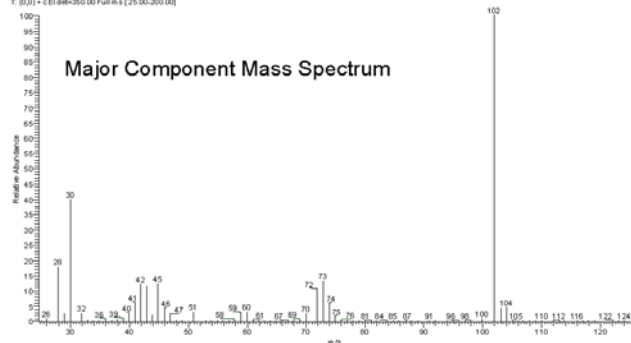
GC/MS Instrument Parameters:

Instrument / Ionization	Gas Chromatograph / Mass Spectrometer / Electron Impact
Solvent	Dichloromethane (100 mM in DMSO, diluted 1/1000 with dichloromethane)
Column	J&W Scientific HP-5MS, 30 m x 0.25 mm ID, 0.25- μ m film thickness
Carrier Gas	Helium at 1.0 mL/min
Oven Program	35°C, hold 2 min; ramp @ 10°C/min to 310°C, hold 2 min
Source Temperature	250°C
Auxiliary Temperature	250°C
Scan Range	25 – 200 amu
Injector Temperature	250°C
Injection Volume / Mode	2 μ L / Splitless
Run Time	31.5 minutes
Data Analysis Software	Xcalibur, v 1.2 and NIST Library v 1.7, build 11/5/1999

RT: 3.05 - 31.47 SM: 30



07/25/07 15:44 RT: 15.88 AU: 1.00 NL: 8.88E5
T: 0.01 s (1.00 sec) (25.00 sec)



NIST Reference Mass Spectrum

