

Chemical Information:

Name: Benzene, 1-methyl-4-(1-methylethyl)-
CAS No.: 99-87-6
Tox21_ID No.: Tox21_201932
NTP_CID No.: 2601

Date of Analysis: 07 October 2009

Supplier: Sigma-Aldrich
Lot No.: 08223MH
MW: 134.22 g/mol

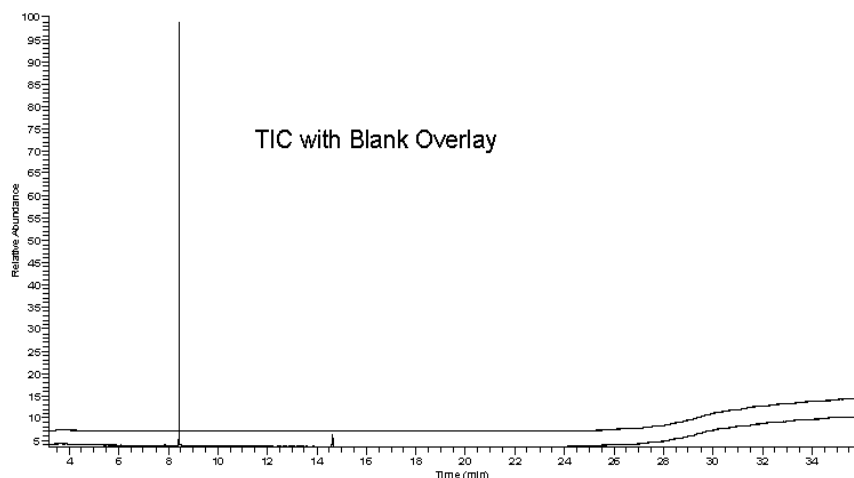
Purity and Identity Results:

Peak Identity	Retention Time (min)	Purity (% Total Area) ^a
Benzene, 1-methyl-4-(1-methylethyl)-	8.44	97.13
unknown	14.63	2.87

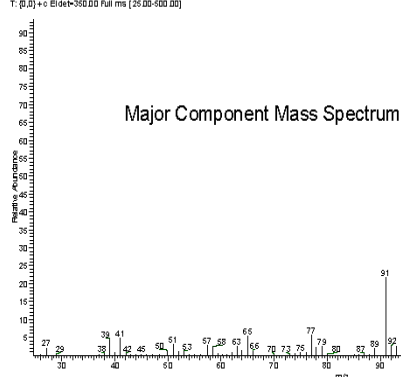
^a Peaks comprising $\geq 0.5\%$ of total area.

GC/MS Instrument Parameters:

Instrument / Ionization	Gas Chromatograph with Mass Spectrometer / Electron Impact
Solvent	Ethanol (~ 1 mg/mL)
Column	J&W Scientific HP-5MS, 30 m x 0.25 mm ID, 0.25- μ m film thickness
Carrier Gas	Helium at 1.0 mL/min
Oven Program	35°C, hold 2 min; ramp @ 10°C/min to 310°C, hold 7 min
Source Temperature	250°C
Auxiliary Temperature	250°C
Scan Range	25 – 500 amu
Injector Temperature	250°C
Injection Volume / Mode	1 μ L / Split (100:1)
Data Analysis Software	Xcalibur, ver 1.2 and NIST Library ver 2.0f, build 10/08/2008



05/07/06 #647 RT: 8.42 AL: 1 SB: 8 9.37-9.40, 9.49-9.52 NL: 1.8785
T: (0.0) + c Eideb-350.DD Full ms (25.00-500.00)



NIST Reference
Mass Spectrum

