

Chemical Information:

Name: Allyl propyl disulfide
CAS No.: 2179-59-1
Tox21_ID No.: Tox21_202612
NTP_CID No.: 5272

Supplier: Supelco
Lot No.: LB38057
MW: 148.29 g/mol

Date of Analysis: 04 August 2010

Purity and Identity Results:

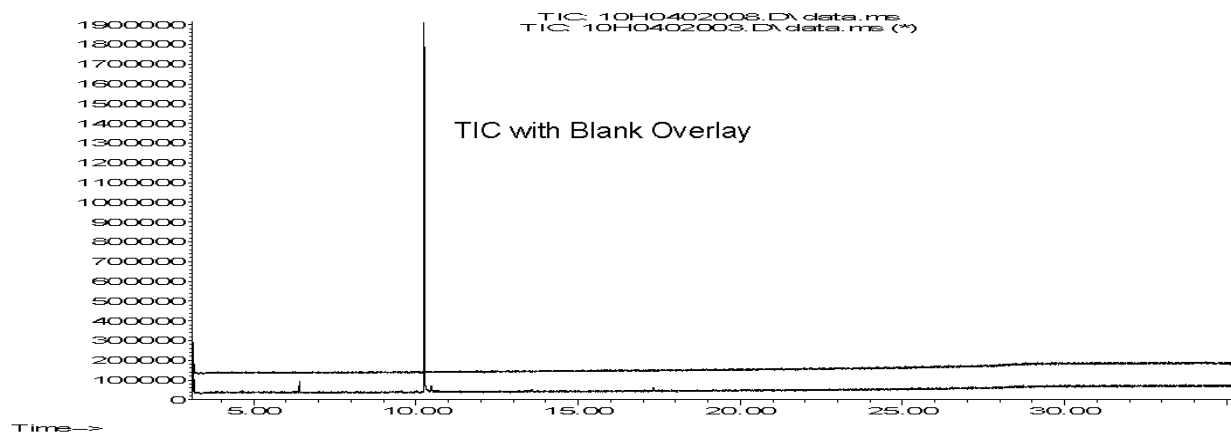
Peak Identity	Retention Time (min)	Purity (% Total Area) ^a
Unknown	6.41	3.30
Allyl propyl disulfide	10.26	96.70

^a Peaks comprising ≥ 0.5% of total area.

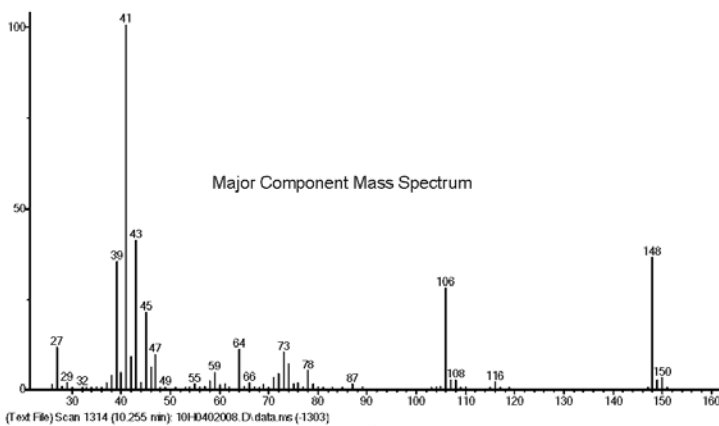
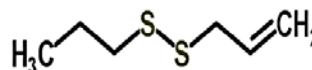
GC/MS Instrument Parameters:

Instrument / Ionization	Gas Chromatograph with Mass Spectrometer / Electron Impact
Solvent	Dichloromethane
Column	J&W Scientific HP-5MS, 30 m x 0.25 mm ID, 0.25-μm film thickness
Carrier Gas	Helium at 1.0 mL/min
Oven Program	35°C, hold 2 min; ramp @ 10°C/min to 300°C, hold 7 min
Source Temperature	230°C
Auxiliary Temperature	250°C
Scan Range	25 – 500 amu
Injector Temperature	250°C
Injection Volume / Mode	1 μL / Split (100:1)
Data Analysis Software	MSD Chemstation, v D.03.00.SP1 and NIST Library v 2.0f, build 10/8/2008

Abundance



Time-->



(Text File) Scan 1314 (10.255 min): 10H0402008.D\data.ms (-1303)

m/z	Molecule / Fragment
148	C ₆ H ₁₂ S ₂
106	C ₃ H ₆ S ₂
78	CH ₂ S ₂
73	C ₃ H ₅ S
64	S ₂
43	C ₃ H ₇
41	C ₃ H ₅
27	C ₂ H ₃