

Chemical Information:

Name: Hexamethylmelamine
CAS No.: 645-05-6
Tox21_ID No.: Tox21_202784
NTP_CID No.: 4349

Supplier: Sigma-Aldrich
Lot No.: MKBF5834V
MW: 210.28 g/mol

Date of Analysis: 16 December 2016

Purity and Identity Results:

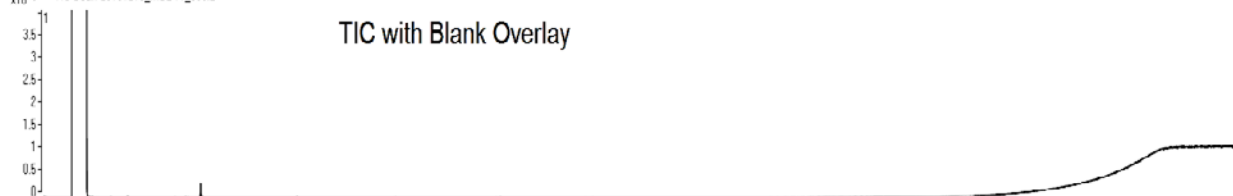
Peak Identity	Retention Time (min)	Purity (% Total Area) ^a
Unknown	22.67	0.67
Hexamethylmelamine	32.29	99.33

^a Peaks comprising $\geq 0.5\%$ of total area.

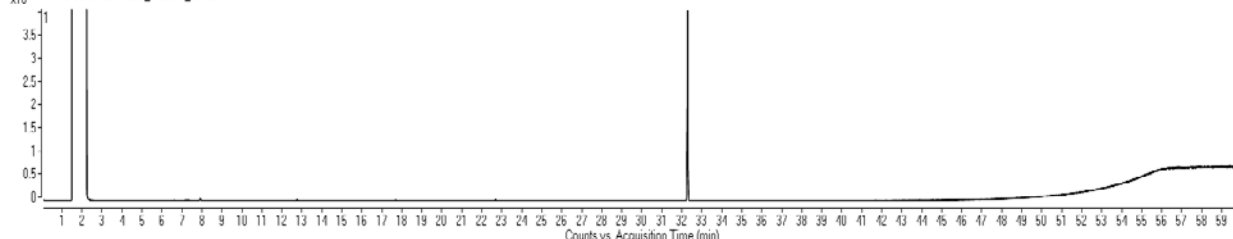
GC/MS Instrument Parameters:

Instrument / Ionization	Gas Chromatograph with Mass Spectrometer / Electron Impact
Solvent	Acetone
Column	Rtx-5 MS, 30 m x 0.25 mm ID, 1- μ m film thickness
Carrier Gas	Helium at 1.5 mL/min
Oven Program	50°C, hold 2 min; ramp @ 5°C/min to 315°C, hold 5 min
Source Temperature	230°C
Auxiliary Temperature	250°C
Scan Range	50 – 400 amu
Injector Temperature	250°C
Injection Volume / Mode	1 μ L / Splitless
Data Analysis Software	MassHunter GC/MS Acquisition B.07.02.1938 / MassHunter Qualitative Analysis B.07.00 Build 7.0.7024.0 / NIST Library Version 2.2f Build 2014

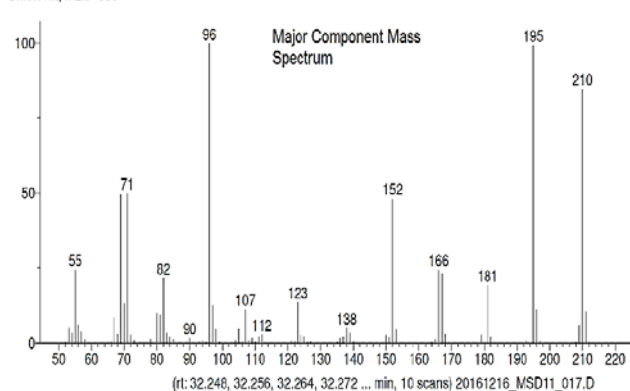
x10⁵ • TIC Scan 20161216_MSD11_003.D



x10⁵ • TIC Scan 20161216_MSD11_017.D



Unknown; InLib=558



Altrexamine
C₉H₁₃N₆, MF: 917, RMF: 918, Prob: 89.9%, CAS: 645-05-6, Lib: replib; ID: 12677.

