

Chemical Information:

Name: 2,6-Naphthalenedicarboxylic acid, dimethyl ester
CAS No.: 840-65-3 Supplier: Sigma-Aldrich
Tox21_ID No.: Tox21_202769 Lot No.: 04408EO
NTP_CID No.: 3628 MW: 244.24 g/mol

Date of Analysis: 14 December 2016

Purity and Identity Results:

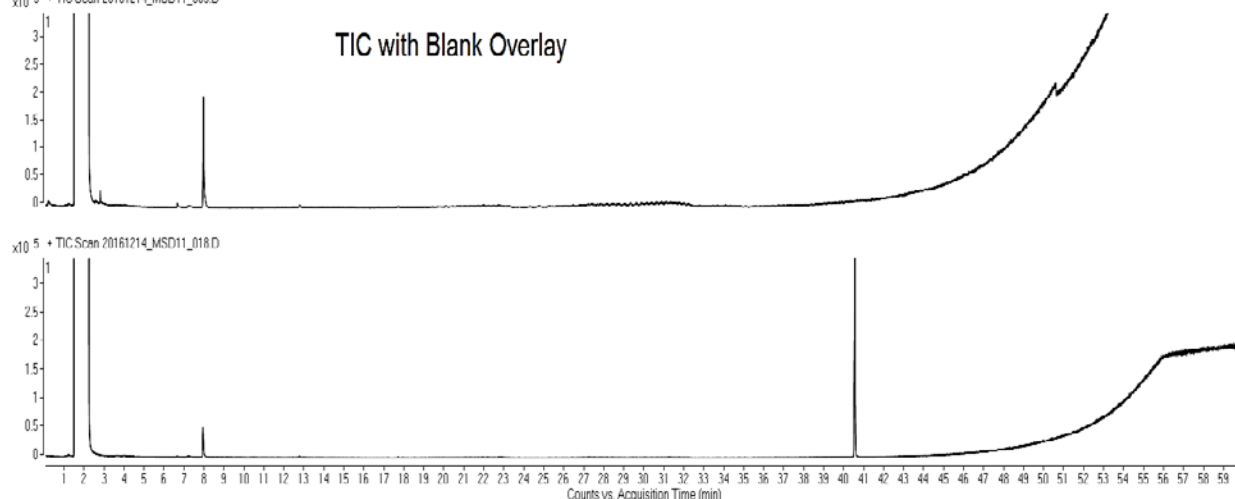
Peak Identity	Retention Time (min)	Purity (% Total Area) ^a
2,6-Naphthalenedicarboxylic acid, dimethyl ester	40.56	98.54

^a Peaks comprising $\geq 0.5\%$ of total area.

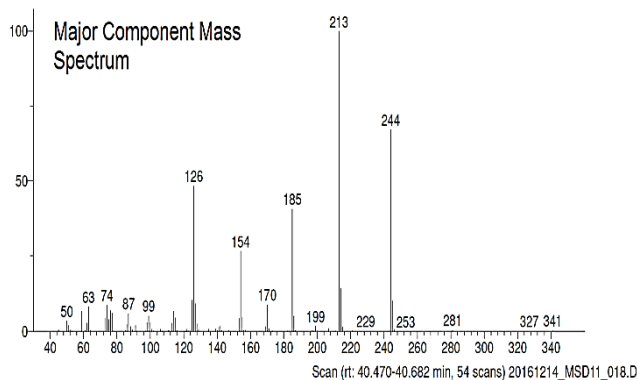
GC/MS Instrument Parameters:

Instrument / Ionization	Gas Chromatograph with Mass Spectrometer / Electron Impact
Solvent	Acetone
Column	Rtx-5 MS, 30 m x 0.25 mm ID, 1- μ m film thickness
Carrier Gas	Helium at 1.5 mL/min
Oven Program	50°C, hold 2 min; ramp @ 5°C/min to 315°C, hold 5 min
Source Temperature	230°C
Auxiliary Temperature	250°C
Scan Range	40 – 380 amu
Injector Temperature	250°C
Injection Volume / Mode	1 μ L / Splitless
Data Analysis Software	MassHunter GC/MS Acquisition B.07.02.1938 / MassHunter Qualitative Analysis B.07.00 Build 7.0.7024.0 / NIST Library Version 2.2f Build 2014

x10⁵ + TIC Scan 20161214_MSD11_003.D



Major Component Mass Spectrum



Hit 1: 2,6-Naphthalenedicarboxylic acid, dimethyl ester
C14H12O4; MF: 925; RMF: 946; Prob 98.2%; CAS: 840-65-3; Lib: replib; ID: 24974.

NIST Reference Mass Spectrum

