

### Chemical Information:

Name: 2,4,6-Trichlorophenol  
CAS No.: 88-06-2  
Tox21\_ID No.: Tox21\_202307  
NTP\_CID No.: 155

Supplier: Sigma-Aldrich  
Lot No.: 12922MA  
MW: 197.45 g/mol

Date of Analysis: 24 October 2007

### Purity and Identity Results:

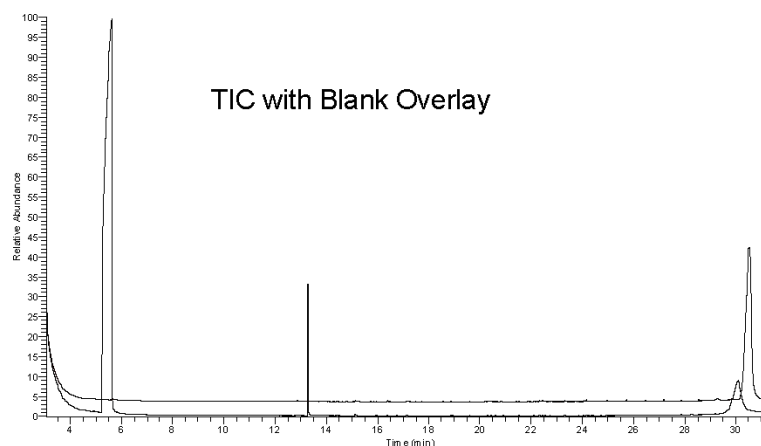
Peak Identity	Retention Time (min)	Purity (% Total Area) <sup>a</sup>
DMSO	5.63	Not applicable
2,4,6-Trichlorophenol	13.30	99.87

<sup>a</sup> Peaks comprising  $\geq 0.5\%$  of total area.

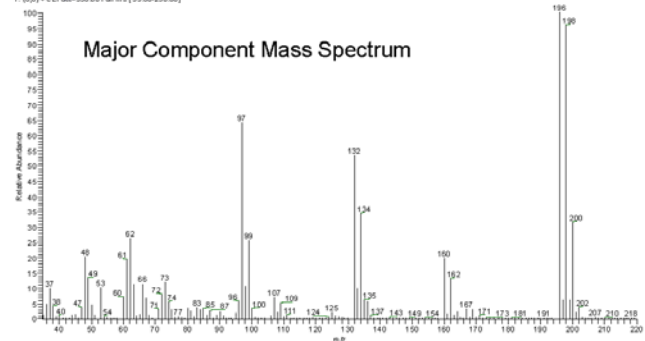
### GC/MS Instrument Parameters:

Instrument / Ionization	Gas Chromatograph / Mass Spectrometer / Electron Impact
Solvent	Dichloromethane (100 mM in DMSO, diluted 1/1000 with dichloromethane)
Column	J&W Scientific HP-5MS, 30 m x 0.25 mm ID, 0.25- $\mu$ m film thickness
Carrier Gas	Helium at 1.0 mL/min
Oven Program	35°C, hold 2 min; ramp @ 10°C/min to 310°C, hold 2 min
Source Temperature	250°C
Auxiliary Temperature	250°C
Scan Range	35 – 250 amu
Injector Temperature	250°C
Injection Volume / Mode	2 $\mu$ L / Splitless
Run Time	31.5 minutes
Data Analysis Software	Xcalibur, v 1.2 and NIST Library v 1.7, build 11/5/1999

RT: 3.05 - 31.51 SM: 90



07/24/07 09:07 RT: 13.30 AU: 1.90E8  
T: (0.0) v: e:51 data=350.00 Full.ms [35.00-250.00]



### NIST Reference Mass Spectrum

